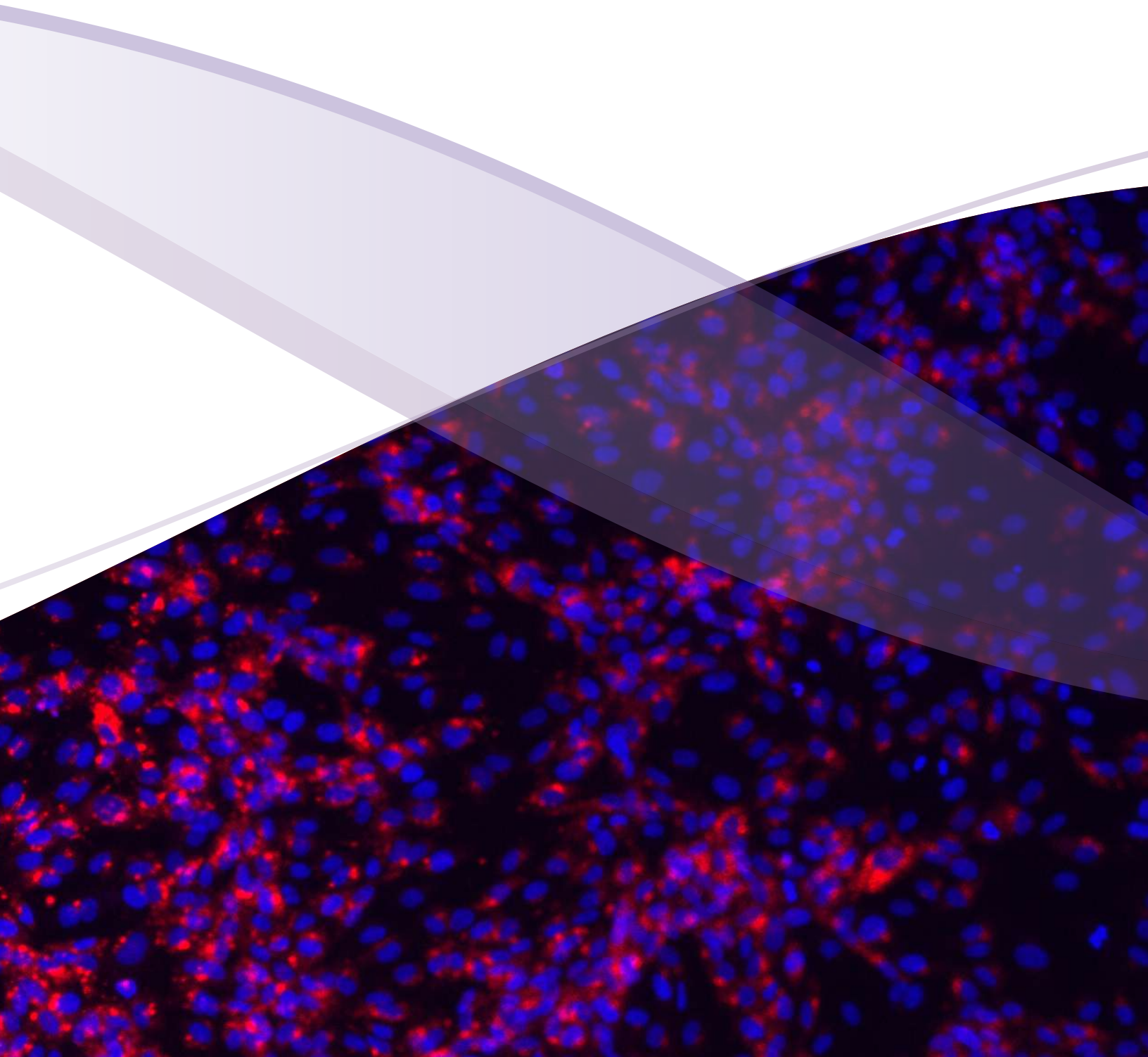




# ATCC Primary Cell Culture Guide

TIPS AND TECHNIQUES FOR CULTURING PRIMARY CELLS



# Table of Contents

<b>ATCC® PRIMARY CELL SOLUTIONS® .....</b>	<b>3</b>	<b>ATCC Primary Human Keratinocyte Solutions...</b>	<b>18</b>
Primary cells and cell types.....	3	Introduction .....	18
Basic properties of primary cells.....	3	Cell Culture Protocols.....	18
Benefits of primary cells.....	3	<b>ATCC Primary Human Melanocyte Solutions.....</b>	<b>21</b>
Isolation of primary cells .....	3	Introduction .....	21
Primary cell culture .....	3	Cell Culture Protocols.....	21
ATCC Primary Cell Solutions.....	5	<b>ATCC Human Mesenchymal Stem Cell and</b>	
<b>ATCC Primary Human Endothelial Cell Solutions</b>	<b>6</b>	<b>Differentiation Solutions.....</b>	<b>24</b>
Introduction .....	6	Introduction .....	24
Cell Culture Protocols.....	6	Cell Culture Protocols.....	25
<b>ATCC Primary Human Smooth Muscle Cell</b>		Adipose-derived Mesenchymal Stem Cell Differentiation	
<b>Solutions.....</b>	<b>9</b>	Protocols.....	26
Introduction .....	9	<b>References .....</b>	<b>28</b>
Cell Culture Protocols.....	9		
<b>ATCC Primary Human Epithelial Cell Solutions.</b>	<b>12</b>		
Introduction .....	12		
Cell Culture Protocols.....	12		
<b>ATCC Primary Human Fibroblast Solutions.....</b>	<b>15</b>		
Introduction .....	15		
Cell Culture Protocols.....	15		

# ATCC® PRIMARY CELL SOLUTIONS®

## Guide to Culturing Human Primary Cells

### PRIMARY CELLS AND CELL TYPES

Primary cell cultures more closely mimic the physiological state of cells in vivo and generate more relevant data representing living systems. Primary cultures consist of cells that have been freshly derived from a living organism and are maintained for growth in vitro. Primary cells can be categorized according to the genus from which they are isolated, as well as by species or tissue type. Each mammalian tissue type is derived from the embryonic germ layer consisting of ectoderm, endoderm and mesoderm, which differentiate into the many cell types that organize into tertiary structures such as skin, muscle, internal organs, bone and cartilage, the nervous system, blood and blood vessels.<sup>1</sup> The cell types most frequently found in primary cell culture are epithelial cells, fibroblasts, keratinocytes, melanocytes, endothelial cells, muscle cells, hematopoietic and mesenchymal stem cells.

### BASIC PROPERTIES OF PRIMARY CELLS

Once adapted to in vitro culture conditions, primary cells undergo a limited, predetermined number of cell divisions before entering senescence. The number of times a primary cell culture can be passaged is minimal due to the Hayflick Limit, nutrient requirements and culture conditions, and the expertise by which they are manipulated and subcultured. In contrast, cell lines that have been immortalized by viral, hTERT, or tumorigenic transformation typically undergo unlimited cell division and have an infinite lifespan. And, unlike tumor cell lines cultured in medium containing 10% to 20% serum, primary cell cultures are fastidious, requiring optimized growth conditions, including the addition of tissue specific cytokines and growth factors for propagation in serum-free or low-serum growth media.

### BENEFITS OF PRIMARY CELLS

Primary cell cultures are commonly used as in vitro tools for pre-clinical and investigative biological research, such as studies of inter- and intracellular communication, developmental biology, and elucidation of disease mechanisms, such as cancer, Parkinson's disease, and diabetes. Historically, investigators have employed immortalized cell lines in research related to tissue function; however, the use of cell lines containing gross mutations and chromosomal abnormalities provides poor indicators of normal cell phenotype and progression of early-stage disease. The use of primary cells, maintained for only short periods of time in vitro, now serves as the best representative of the main functional component of the tissue (in vivo) from which they are derived.

### ISOLATION OF PRIMARY CELLS

The isolation and purification of peripheral blood cells can be easily achieved by differential centrifugation or by positive sorting using magnetic beads. On the other hand, the isolation of a pure population of cells from primary tissue is often difficult to perform, and requires knowledge of how the cell strata should be teased apart into a suspension containing only one predominant cell type. Diagram 1 is an illustration of some of the basic steps used to establish a primary cell culture.<sup>14</sup>

### PRIMARY CELL CULTURE

#### GROWTH REQUIREMENTS

Primary cells, except for those derived from peripheral blood, are anchorage-dependent, adherent cells, meaning they require a surface in order to grow properly in vitro. In most cases, primary cells are cultured in a flat un-coated plastic vessel, but sometimes a microcarrier, which can greatly increase the surface area, can be used. A complete cell culture media, composed of a basal medium supplemented with appropriate growth factors and cytokines, is required. During establishment of primary cultures, it may be useful to include an antibiotic in the growth medium to inhibit contamination introduced from the host tissue. These may include a mixture of gentamicin, penicillin, streptomycin, and amphotericin B. However, long-term use of antibiotics is not advised, since some reagents, such as amphotericin B, may be toxic to cells over time.

#### MAINTENANCE

The maintenance phase begins when cells have attached to the surface of the culture dish. Attachment usually occurs about 24 hours after initiation of the culture. When initiating a culture of cryopreserved primary cells, it is important to remove the spent media once the cells have attached because DMSO is harmful to primary cells and may cause a drop in post-thaw viability. When cells have reached a desired percent of cellular confluence and are actively proliferating, it is time to subculture. It is best to subculture primary cell cultures before reaching 100% confluence, since post-confluent cells may undergo differentiation and exhibit slower proliferation after passaging.

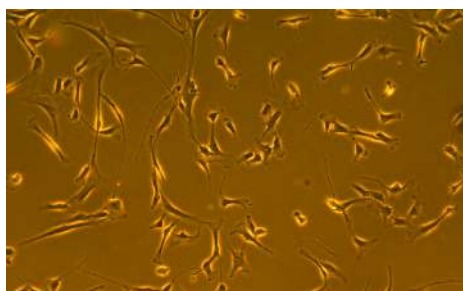
**Diagram 1: Basic steps used to isolate cells from primary tissue**

TISSUE ACQUISITION	DISSECTION	DISAGGREGATION	INCUBATION & GROWTH	SEPARATION & PURIFICATION
	<ul style="list-style-type: none"><li>Process primary tissue, removing fatty and necrotic cells</li></ul>	<ul style="list-style-type: none"><li>Mechanical or enzymatic disaggregation</li><li>Enzymes used:<ul style="list-style-type: none"><li>Trypsin</li><li>Collagenase II</li><li>Elastase</li><li>Hyaluronidase</li><li>DNase</li></ul></li></ul>	<ul style="list-style-type: none"><li>Incubate dispersed cells</li><li>Change medium 24 hours after initiation to remove loose debris &amp; unattached cells</li></ul>	<p>Further purification of primary cells achieved by:</p> <ul style="list-style-type: none"><li>Selective media</li><li>Remove cells at different levels of attachment</li><li>Immunomagnetic beads</li></ul>

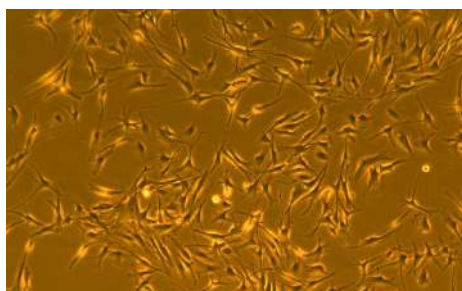
## CELLULAR CONFLUENCE

Cellular confluence refers to the percentage of the culture vessel inhabited by attached cells. For example, 100% cellular confluence means the surface area is completely covered by cells, while 50% confluence means roughly half of the surface is covered. It is an important parameter to track and assess in primary cell culture because different cell types require different confluence end points, at which point they need to be subcultured.

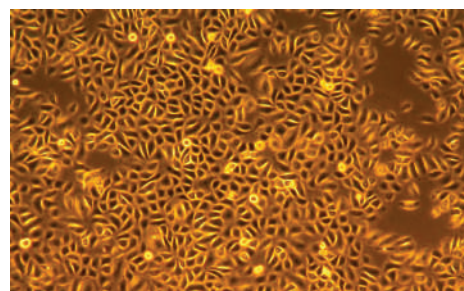
### Levels of cellular confluence



Human smooth muscle cells between 20% and 30% confluence



Human melanocyte cells between 50% and 60% confluence



Human keratinocytes at nearly 100% confluence (note the formation of vacuoles and differentiated cells)

## SUBCULTURE

Anchorage-dependent cells grow in monolayers and need to be subcultured at regular intervals to maintain exponential growth. Subculturing procedures, including recommended split-ratios and medium replenishment (feeding) schedules for each ATCC primary cell culture, are provided on the product information sheet provided with each cell (available online at [www.atcc.org](http://www.atcc.org)). Subcultivation of monolayers involves the breakage of both inter- and intracellular cell-to-surface bonds. Most adherent primary cells require the digestion of their protein attachment bonds with a low concentration of a proteolytic enzyme such as trypsin/EDTA. After the cells have been dissociated and dispersed into a single-cell suspension, they are counted and diluted to the appropriate concentration and transferred to fresh culture vessels where they will reattach and divide.

## CELL COUNTING

Hemocytometers are commonly used to estimate cell number and determine cell viability with the aid of an exclusion dye such as Trypan Blue or Erythrosin B. A hemocytometer is a fairly thick glass slide with two counting chambers, one on each side. Each counting chamber has a mirrored surface with a 3 × 3 mm grid consisting of 9 counting squares. The chambers have raised sides that will hold a coverslip exactly 0.1 mm above the chamber floor. Each of the 9 counting squares holds a volume of 0.0001 mL. Alternatively, counting cells can also be achieved by using an automated cell counter, such as Vi-CELL®.

For a detailed description of cell counting using a hemocytometer, refer to the ATCC Animal Cell Culture Guide – available online at [www.atcc.org](http://www.atcc.org).



## CRYOPRESERVATION AND RECOVERY

Special attention is needed to cryopreserve and thaw primary cells in order to minimize cell damage and death during each process. Cryopreservation of human cells is best achieved with the use of a cryoprotectant, such as DMSO or glycerol. Most primary cell cultures can be cryopreserved in a mixture of 80% complete growth medium supplemented with 10% FBS and 10% DMSO. The freezing process should be slow, at a rate of -1°C per minute, to minimize the formation of ice crystals within the cells. Once frozen, cultures are stored in the vapor phase of liquid nitrogen, or below -130°C. Additional information about freezing cells can be found in ATCC Technical Document: Cryogenic Storage of Animal Cells, available online at [www.atcc.org](http://www.atcc.org).

Thawing cryopreserved cells is a rapid process and is accomplished by immersing frozen cells in a 37°C water bath for about 1 to 2 minutes. Care should be taken not to centrifuge primary cells upon thaw, since they are extremely sensitive to damage during recovery from cryopreservation. It is best to plate cells directly upon thaw, and allow cultures to attach for the first 24 hours before changing the medium to remove residual DMSO.

## CHALLENGES OF PRIMARY CELL ISOLATION AND CULTURE

There are several challenges associated with the use of primary cells. One of the greatest hurdles primary cell culturists face is limited cell accessibility due to issues with donor tissue supply, difficulty with cell isolation/purification, quality assurance and consistency, and contamination risks. Data comparability is also a serious issue with primary cell use, and arises out of variability among reagents used and the procedures implemented by individual scientists and laboratories to isolate and culture primary cells. A comparison between primary cells and continuous cell lines is described in Table 1.

**Table 1: Comparison between primary cells and continuous cell lines**

Properties	Primary cells	Continuous cell lines
Life span & cell proliferation	Finite; limited to a small number of cell doublings	Infinite when handled properly
Consistency	Variability exists between donors and preparations	Minimal variability
Genetic integrity	Retains in vivo tissue genetic makeup through cell doublings	Subject to genetic drift as cells divide
Biological relevance	More closely mimics the physiology of cells in vivo	Relevance can drift over time as cells divide
Ease of use (freeze-thaw & use)	Requires optimized culture conditions and careful handling	Well established conditions and robust protocols exist
Time & expense to use	More time and less abundance of cells	Less time and more abundance of cells

## ATCC PRIMARY CELL SOLUTIONS

ATCC has provided a solution to help investigators overcome the high cost and inconsistency found in routine primary cell culture with the development of ATCC Primary Cell Solutions, a standardized cell culture system that includes high quality cells, media, supplements, reagents, and protocols. ATCC Primary Cell Solutions focuses on providing researchers with superior quality from a trusted source – each lot of ATCC Primary Cell Solutions primary cells is:

### CRYOPRESERVED AT EARLY PASSAGE

- ATCC Primary Cell Solutions primary cells are frozen at passages 1 through 3
- Early passage material ensures higher viability and optimal plating efficiency

### PERFORMANCE TESTED

- ATCC Primary Cell Solutions cells, media, kit supplements, and reagents are tested for optimal reliability
- Growth and morphology are assessed to ensure all components work synergistically

### QUALITY CONTROLLED TO ENSURE SAFETY, PURITY, AND FUNCTIONALITY

- Sterility testing – all cells are tested for bacteria, yeast, fungi, and Mycoplasma
- Viral testing – HIV-1, HIV-2, HBV, and HCV tissue screening is performed at isolation
- Viability and growth – viability and growth of each lot of cells is checked before freezing and after-thawing
- Staining – staining for cell-specific marker expression is determined and performed for some cell types

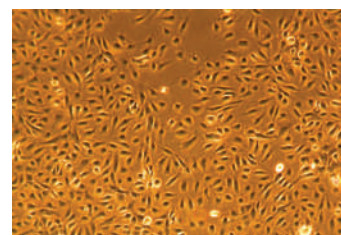
ATCC Primary Cell Solutions basal media and cell-specific growth kits are designed to support recovery and proliferation of ATCC Primary Cell Solutions primary cells in vitro. Used as a system, ATCC Primary Cell Solutions primary cells, basal media, and cell-specific growth kits provide all the components needed to be successful in primary cell research. (Detailed formulations for each growth kit can be found at [www.atcc.org](http://www.atcc.org).)

# ATCC PRIMARY HUMAN ENDOTHELIAL CELL SOLUTIONS

## INTRODUCTION

Endothelial cells form the endothelium – the thin layer of cells that line the interior surface of blood vessels forming a smooth anticoagulant surface that functions as a selective filter to regulate the passage of gases, fluid, immune cells, and various molecules.<sup>14</sup> Human endothelial cells can be isolated from human umbilical vein, the aorta, the pulmonary and coronary arteries, and the skin, and serve as useful tools in the study of angiogenesis, cancer therapy, wound healing, burn therapy, high-throughput and high-content screening projects, cell signaling studies, gene expression profiling, toxicology screening, tissue engineering, and regeneration.

ATCC Primary Human Endothelial Cells can be cultured in complete growth medium containing either bovine brain extract (BBE) or vascular endothelial growth factor (VEGF). Use of the Endothelial Cell Growth Kit-VEGF (ATCC [PCS-100-041](#)) will support a faster rate of proliferation, while the Endothelial Cell Growth Kit-BBE (ATCC [PCS-100-040](#)) is recommended if a less defined cell culture medium is desired.



Primary Dermal Microvascular Endothelial Cells, Normal, Human, Neonatal (ATCC [PCS-110-010](#))

## CELL CULTURE PROTOCOLS

### MATERIALS NEEDED

**Table 2: Primary cells and complete growth medium**

Endothelial Cells	Growth Kit Options*	Basal Medium
Umbilical Vein Endothelial Cells, Normal, Human (ATCC <a href="#">PCS-100-010</a> )	Choose ONE: Endothelial Cell Growth Kit-BBE (ATCC <a href="#">PCS-100-040</a> ) Endothelial Cell Growth Kit-VEGF (ATCC <a href="#">PCS-100-041</a> )	Vascular Cell Basal Medium (ATCC <a href="#">PCS-100-030</a> )
Umbilical Vein Endothelial Cells, Normal, Human, Pooled (ATCC <a href="#">PCS-100-013</a> )		
Aortic Endothelial Cells; Normal, Human (ATCC <a href="#">PCS-100-011</a> )		
Coronary Artery Endothelial Cells, Normal, Human (ATCC <a href="#">PCS-100-020</a> ), Pulmonary Artery Endothelial Cells, Normal, Human (ATCC <a href="#">PCS-100-022</a> ),		
Dermal Microvascular Endothelial Cells, Normal, Human, Neonatal (ATCC <a href="#">PCS-110-010</a> )	Choose ONE: Microvascular Endothelial Cell Growth Kit-BBE (ATCC <a href="#">PCS-110-040</a> ) Microvascular Endothelial Cell Growth Kit-VEGF (ATCC <a href="#">PCS-110-041</a> )	
<b>Reagents for Subculture</b>		
D-PBS (ATCC <a href="#">30-2200</a> )		
Trypsin-EDTA for Primary Cells (ATCC <a href="#">PCS-999-003</a> )		
Trypsin Neutralizing Solution (ATCC <a href="#">PCS-999-004</a> )		

\*Phenol red and antibiotics may be added if desired, and are listed in the appendix.

### PREPARATION OF COMPLETE GROWTH MEDIA

- 1 Obtain 1 growth kit from the freezer; make sure that the caps of all components are tight.
- 2 Thaw the components of the growth kit just prior to adding them to the basal medium. It is necessary to warm the L-glutamine component in a 37°C water bath and shake to dissolve any precipitates prior to adding to the basal medium.
- 3 Obtain 1 bottle of Vascular Cell Basal Medium from cold storage.
- 4 Decontaminate the external surfaces of all growth kit component vials and the basal medium bottle by spraying them with 70% ethanol.
- 5 Using aseptic technique, and working in a laminar flow hood or biosafety cabinet, transfer the volume of each growth kit component (volumes for each growth kit are provided on the product information sheet; the following table (Table 3) represents the Endothelial Cell Growth Kit-VEGF) to the bottle of basal medium using a separate sterile pipette for each transfer.
- 6 Tightly cap the bottle of complete growth medium and swirl the contents gently to assure a homogeneous solution. Do not shake forcefully to avoid foaming. Label and date the bottle.
- 7 Complete growth media should be stored in the dark at 2°C to 8°C (do not freeze). When stored under these conditions, complete growth media is stable for 30 days.

**Table 3: Endothelial Cell Growth Kit-VEGF (ATCC PCS-100-041)**

Component	Volume	Final Concentration
rh VEGF	0.5 mL	5 ng/mL
rh EGF	0.5 mL	5 ng/mL
rh FGF basic	0.5 mL	5 ng/mL
rh IGF-1	0.5 mL	15 ng/mL
L-glutamine	25.0 mL	10 mM
Heparin sulfate	0.5 mL	0.75 Units/mL
Hydrocortisone hemisuccinate	0.5 mL	1 µg/mL
Fetal Bovine Serum	10.0 mL	2%
Ascorbic acid	0.5 mL	50 µg/mL

### HANDLING PROCEDURE FOR FROZEN CELLS AND INITIATION OF CULTURES

- 1 Refer to the batch specific information provided on the last page of the product information sheet for the total number of viable cells recovered from each lot of ATCC Primary Human Endothelial Cells.
- 2 Using the total number of viable cells, determine how much surface area can be inoculated to achieve an initial seeding density between 2,500 and 5,000 cells per cm<sup>2</sup> for most Primary Human Endothelial Cells offered by ATCC; the exception being Primary Dermal Microvascular Endothelial Cells, which should be seeded at a density of 5,000 cells per cm<sup>2</sup>.
- 3 Prepare the desired combination of flasks. Add 5 mL of complete growth media per 25 cm<sup>2</sup> of surface area. Place the flasks in a 37°C, 5% CO<sub>2</sub>, humidified incubator and allow the media to pre-equilibrate to temperature and pH for 30 minutes prior to adding cells.
- 4 While the culture flasks equilibrate, remove 1 vial of ATCC Primary Human Endothelial Cells from storage and thaw the cells by gentle agitation in a 37°C water bath. To reduce the possibility of contamination, keep the O-ring and cap out of the water. Thawing should be rapid (approximately 1 to 2 minutes).
- 5 Remove the vial from the water bath as soon as the contents are thawed, and decontaminate by dipping in or spraying with 70% ethanol. All operations from this point onward should be carried out under strict aseptic conditions.
- 6 Add the appropriate volume of complete growth media [volume = (1 mL x number of flasks to be seeded) – 1 mL] into a sterile conical tube. Using a sterile pipette, transfer the cells from the cryovial to the conical tube. Gently pipette the cells to homogenize the suspension. Do not centrifuge.
- 7 Transfer 1.0 mL of the cell suspension to each of the pre-equilibrated culture flasks prepared in steps 1 to 3 of Handling Procedure for Frozen Cells and Initiation of Cultures. Pipette several times, then cap and gently rock each flask to evenly distribute the cells.
- 8 Place the seeded culture flasks in the incubator at 37°C with a 5% CO<sub>2</sub> atmosphere. Incubate for at least 24 hours before processing the cells further.

### MAINTENANCE

- 1 Before beginning, pre-warm complete growth media in a 37°C water bath. This will take between 10 and 30 minutes, depending on the volume. If using a small volume of medium (50 mL or less), warm only the volume needed in a sterile conical tube. Avoid warming complete growth media multiple times.
- 2 24 hours after seeding, remove the cells from the incubator and view each flask under the microscope to determine percent cellular confluence.
- 3 Carefully remove the spent media without disturbing the monolayer.
- 4 Add 5 mL of fresh, pre-warmed complete growth media per 25 cm<sup>2</sup> of surface area and return the flasks to the incubator.
- 5 After 24 to 48 hours, view each flask under the microscope to determine percent cellular confluence. If not ready to passage, repeat steps 3 and 4 as described above. When cultures have reached approximately 80% confluence, and are actively proliferating (many mitotic figures are visible), it is time to subculture. Subculture endothelial cells before reaching confluence; post-confluent primary endothelial cells may exhibit slower proliferation after passaging.

### SUBCULTURE

- 1 Passage Primary Human Endothelial Cells when cultures have reached approximately 80% confluence.
- 2 Warm both the Trypsin-EDTA for Primary Cells (ATCC PCS-999-003) and the Trypsin Neutralizing Solution (ATCC PCS-999-004) to room temperature prior to dissociation. Warm complete growth medium to 37°C prior to use with the cells.
- 3 For each flask, carefully aspirate the spent media without disturbing the monolayer.
- 4 Rinse the cell layer two times with 3 to 5 mL D-PBS (ATCC 30-2200) to remove residual traces of serum.

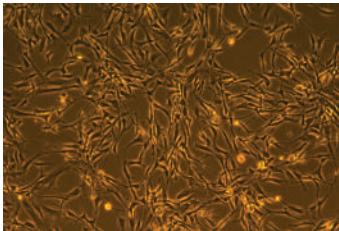
- 5 Add pre-warmed trypsin-EDTA solution (1 to 2 mL for every 25 cm<sup>2</sup>) to each flask.
- 6 Gently rock each flask to ensure complete coverage of the trypsin-EDTA solution over the cells, and then aspirate the excess fluid off of the monolayer.
- 7 Observe the cells under the microscope. When the cells pull away from each other and round up (typically within 3 to 5 minutes), remove the flask from the microscope and gently tap it from several sides to promote detachment of the cells from the flask surface.
- 8 When the majority of cells appear to have detached, quickly add an equal volume of Trypsin Neutralizing Solution (ATCC [PCS-999-004](#)) to each flask. Gently pipette or swirl the culture to ensure all of the trypsin-EDTA solution has been neutralized.
- 9 Transfer the dissociated cells to a sterile centrifuge tube and set aside while processing any remaining cells in the flask.
- 10 Add 3 to 5 mL D-PBS (ATCC [30-2200](#)) to the flask to collect any additional cells that might have been left behind.
- 11 Transfer the cell/D-PBS suspension to the centrifuge tube containing the trypsin-EDTA-dissociated cells.
- 12 Repeat steps 10 and 11 as needed until all cells have been collected from the flask.
- 13 Centrifuge the cells at 150 x g for 3 to 5 minutes.
- 14 Aspirate the neutralized dissociation solution from the cell pellet and resuspend the cells in 2 to 8 mL fresh, pre-warmed, complete growth medium.
- 15 Count the cells and seed new flasks at a density of 2,500 to 5,000 cells per cm<sup>2</sup>; however, be sure to seed Primary Dermal Microvascular Endothelial Cells at 5,000 cells per cm<sup>2</sup>.
- 16 Place newly seeded flasks in a 37°C, 5% CO<sub>2</sub>, incubator for at least 24 to 48 hours before processing the cells further. Refer to Maintenance for guidelines on feeding.



# ATCC PRIMARY HUMAN SMOOTH MUSCLE CELL SOLUTIONS

## INTRODUCTION

Vascular tissue is made up of a diverse population of cell types, including endothelial cells, smooth muscle cells, pericytes, fibroblasts, and other connective tissue cell types. Together these cell types form tight junctions or connections, which allow for permeability for both passive and active transport across the vessel wall. Vascular smooth muscle cells make up the smooth muscle layer of blood vessels and can be co-cultured with vascular endothelium.<sup>14</sup> Smooth muscle cells isolated from human ascending (thoracic) and descending (abdominal) aorta, coronary artery, and pulmonary artery are useful for studying vascular diseases such as thrombosis and atherosclerosis.



Primary Aortic Smooth Muscle Cells, Normal, Human (ATCC [PCS-100-012](#))

## CELL CULTURE PROTOCOLS

### MATERIALS NEEDED

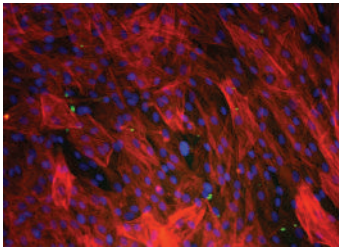
Table 4: Primary cells and complete growth medium

Smooth Muscle Cells	Growth Kit Options*	Basal Medium
Aortic Smooth Muscle Cells, Normal, Human (ATCC <a href="#">PCS-100-012</a> )	Vascular Smooth Muscle Cell Growth Kit (ATCC <a href="#">PCS-100-042</a> )	Vascular Cell Basal Medium (ATCC <a href="#">PCS-100-030</a> )
Coronary Artery Smooth Muscle Cells, Normal, Human (ATCC <a href="#">PCS-100-021</a> )		
Pulmonary Artery Smooth Muscle Cells, Normal, Human (ATCC <a href="#">PCS-100-023</a> )		
Lung Smooth Muscle Cells, Normal, Human (ATCC <a href="#">PCS-130-010</a> )		
Bronchial/Trachial Smooth Muscle Cells, Normal, Human (ATCC <a href="#">PCS-130-011</a> )		
Bladder Smooth Muscle Cells, Normal, Human (ATCC <a href="#">PCS-420-012</a> )		
Uterine Smooth Muscle Cells, Normal, Human (ATCC <a href="#">PCS-460-010</a> )		
Reagents for Subculture		
D-PBS (ATCC <a href="#">30-2200</a> )		
Trypsin-EDTA for Primary Cells (ATCC <a href="#">PCS-999-003</a> )		
Trypsin Neutralizing Solution (ATCC <a href="#">PCS-999-004</a> )		

\*Phenol red and antibiotics may be added if desired, and are listed in the appendix.

### PREPARATION OF COMPLETE GROWTH MEDIA

- 1 Obtain 1 growth kit from the freezer; make sure that the caps of all components are tight.
- 2 Thaw the components of the growth kit just prior to adding them to the basal medium. It is necessary to warm the L-glutamine component in a 37°C water bath and shake to dissolve any precipitates prior to adding to the basal medium.
- 3 Obtain 1 bottle of Vascular Cell Basal Medium from cold storage.
- 4 Decontaminate the external surfaces of all growth kit component vials and the basal medium bottle by spraying them with 70% ethanol.
- 5 Using aseptic technique, and working in a laminar flow hood or biosafety cabinet, transfer the volume of each growth kit component, as indicated in the following table to the bottle of basal medium using a separate sterile pipette for each transfer.



ATCC Primary Cell Solutions aortic smooth muscle cells (ATCC [PCS-100-012](#)) dual stained for von Willebrand factor (green) as a marker for endothelial cells and smooth muscle  $\alpha$ -actin (red) after differentiation.

Table 5: Vascular Smooth Muscle Cell Growth Kit (ATCC [PCS-100-042](#))

Component	Volume	Final Concentration
rh FGF-basic	0.5 mL	5 ng/mL
rh Insulin	0.5 mL	5 $\mu$ g/mL
Ascorbic acid	0.5 mL	50 $\mu$ g/mL
L-glutamine	25.0 mL	10 mM
rh EGF	0.5 mL	5 ng/mL
Fetal Bovine Serum	25.0 mL	5%

- 6 Tightly cap the bottle of complete growth medium and swirl the contents gently to assure a homogeneous solution. Do not shake forcefully to avoid foaming. Label and date the bottle.
- 7 Complete growth media should be stored in the dark at 2°C to 8°C (do not freeze). When stored under these conditions, complete growth media is stable for 30 days.

#### HANDLING PROCEDURE FOR FROZEN CELLS AND INITIATION OF CULTURES

- 1 Refer to the batch specific information provided on the last page of the product information sheet for the total number of viable cells recovered from each lot of ATCC Primary Human Smooth Muscle Cells.
- 2 Using the total number of viable cells, determine how much surface area can be inoculated to achieve an initial seeding density between 2,500 and 5,000 cells per cm<sup>2</sup>.
- 3 Prepare the desired combination of flasks. Add 5 mL of complete growth media per 25 cm<sup>2</sup> of surface area. Place the flasks in a 37°C, 5% CO<sub>2</sub>, humidified incubator and allow the media to pre-equilibrate to temperature and pH for 30 minutes prior to adding cells.
- 4 While the culture flasks equilibrate, remove 1 vial of ATCC Primary Human Smooth Muscle Cells from storage and thaw the cells by gentle agitation in a 37°C water bath. To reduce the possibility of contamination, keep the O-ring and cap out of the water. Thawing should be rapid (approximately 1 to 2 minutes).
- 5 Remove the vial from the water bath as soon as the contents are thawed, and decontaminate by dipping in or spraying with 70% ethanol. All operations from this point onward should be carried out under strict aseptic conditions.
- 6 Add the appropriate volume of complete growth media [volume = (1 mL x number of flasks to be seeded) – 1 mL] into a sterile conical tube. Using a sterile pipette, transfer the cells from the cryovial to the conical tube. Gently pipette the cells to homogenize the suspension. Do not centrifuge.
- 7 Transfer 1.0 mL of the cell suspension to each of the pre-equilibrated culture flasks prepared in steps 1 to 3 of Handling Procedure for Frozen Cells and Initiation of Cultures. Pipette several times, then cap and gently rock each flask to evenly distribute the cells.
- 8 Place the seeded culture flasks in the incubator at 37°C with a 5% CO<sub>2</sub> atmosphere. Incubate for at least 24 hours before processing the cells further.

#### MAINTENANCE

- 1 Before beginning, pre-warm complete growth media in a 37°C water bath. This will take between 10 and 30 minutes, depending on the volume. If using a small volume of medium (50 mL or less), warm only the volume needed in a sterile conical tube. Avoid warming complete growth media multiple times.
- 2 24 to 36 hours after seeding, remove the cells from the incubator and view each flask under the microscope to determine percent cellular confluence.
- 3 Carefully remove the spent media without disturbing the monolayer.
- 4 Add 5 mL of fresh, pre-warmed complete growth media per 25 cm<sup>2</sup> of surface area and return the flasks to the incubator.
- 5 After 24 to 48 hours, view each flask under the microscope to determine percent cellular confluence. If not ready to passage, repeat steps 3 and 4 as described above. When cultures have reached approximately 80% to 90% confluence, and are actively proliferating (many mitotic figures are visible), it is time to subculture. Vascular smooth muscle cells are contact inhibited; post-confluent vascular smooth muscle cells may not proliferate after passaging.

#### NOTE:

Cells are typically ready to passage after 7 to 9 days in culture when inoculated with 2,500 cells/cm<sup>2</sup>.

#### SUBCULTURE

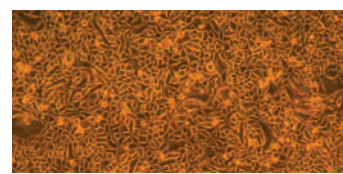
- 1 Passage normal vascular smooth muscle cells when the culture has reached approximately 80% confluence.
- 2 Warm both the Trypsin-EDTA for Primary Cells (ATCC [PCS-999-003](#)) and the Trypsin Neutralizing Solution (ATCC [PCS-999-004](#)) to room temperature prior to dissociation. Warm complete growth medium to 37°C prior to use with the cells.
- 3 For each flask, carefully aspirate the spent media without disturbing the monolayer.
- 4 Rinse the cell layer two times with 3 to 5 mL D-PBS (ATCC [30-2200](#)) to remove residual traces of serum.
- 5 Add pre-warmed trypsin-EDTA solution (1 to 2 mL for every 25 cm<sup>2</sup>) to each flask.
- 6 Gently rock each flask to ensure complete coverage of the trypsin-EDTA solution over the cells, and then aspirate the excess fluid off of the monolayer.
- 7 Observe the cells under the microscope. When the cells pull away from each other and round up (typically within 1 to 3 minutes), remove the flask from the microscope and gently tap it from several sides to promote detachment of the cells from the flask surface.
- 8 When the majority of cells appear to have detached, quickly add an equal volume of Trypsin Neutralizing Solution (ATCC [PCS-999-004](#)) to each flask. Gently pipette or swirl the culture to ensure all of the trypsin-EDTA solution has been neutralized.

- 9 Transfer the dissociated cells to a sterile centrifuge tube and set aside while processing any remaining cells in the flask.
- 10 Add 3 to 5 mL D-PBS (ATCC [30-2200](#)) to the flask to collect any additional cells that might have been left behind.
- 11 Transfer the cell/D-PBS suspension to the centrifuge tube containing the trypsin-EDTA-dissociated cells.
- 12 Repeat steps 10 and 11 as needed until all cells have been collected from the flask.
- 13 Centrifuge the cells at 150 x g for 3 to 5 minutes.
- 14 Aspirate the neutralized dissociation solution from the cell pellet and resuspend the cells in 2 to 8 mL fresh, pre-warmed, complete growth medium.
- 15 Count the cells and seed new flasks at a density of 2,500 to 5,000 cells per cm<sup>2</sup>.
- 16 Place newly seeded flasks in a 37°C, 5% CO<sub>2</sub>, incubator for at least 24 to 48 hours before processing the cells further. Refer to Maintenance for guidelines on feeding.

# ATCC PRIMARY HUMAN EPITHELIAL CELL SOLUTIONS

## INTRODUCTION

Epithelia are tissues found throughout the body. They line the cavities of glands and organs in the body and also cover flat surfaces, such as skin. Epithelial cells are polarized cells that discriminate between an apical and basolateral compartment. They perform a variety of functions depending on their location, including boundary and protection, sensory, secretion, transportation, absorption, and diffusion. One challenging aspect of culturing primary epithelial cells is overgrowth of stromal cells. Stromal fibroblasts can be inhibited by culturing explants in low serum or serum-free culture media, limiting the calcium concentration in the growth medium, selectively inhibiting fibroblasts with agents, or by targeting with antimesodermal antibodies.<sup>14</sup> ATCC Primary Cell Solutions offers epithelial cells isolated from human bronchi, trachea, and small airways, as well as the cornea, prostate, and kidneys. The usefulness of such cultures has been found in studies related to inflammation, microbial infection, and pathogenesis including influenza, cancer, toxicology, gene regulation and tissue development, cell-matrix interactions, as well as application in toxicology testing and drug screening/development.



Primary Prostate Epithelial Cells; Normal, Human (ATCC [PCS-440-010](#))

## CELL CULTURE PROTOCOLS

### MATERIALS NEEDED

**Table 6: Primary cells and complete growth medium**

Epithelial Cells	Growth Kit Options*	Basal Medium
Small Airway Epithelial Cells; Normal, Human (ATCC <a href="#">PCS-301-010</a> )	Bronchial Epithelial Cell Growth Kit (ATCC <a href="#">PCS-300-040</a> )	Airway Epithelial Cell Basal Medium (ATCC <a href="#">PCS-300-030</a> )
Bronchial/Tracheal Epithelial Cells; Normal, Human (ATCC <a href="#">PCS-300-010</a> )	Bronchial Epithelial Cell Growth Kit (ATCC <a href="#">PCS-300-040</a> )	
Lobar Bronchial Epithelial Cells; Normal, Human (ATCC <a href="#">PCS-300-015</a> )	Bronchial Epithelial Cell Growth Kit (ATCC <a href="#">PCS-300-040</a> )	
Renal Proximal Tubule Epithelial Cells; Normal, Human (ATCC <a href="#">PCS-400-010</a> )	Renal Epithelial Cell Growth Kit (ATCC <a href="#">PCS-400-040</a> )	Renal Epithelial Cell Basal Medium (ATCC <a href="#">PCS-400-030</a> )
Renal Cortical Epithelial Cells; Normal, Human (ATCC <a href="#">PCS-400-011</a> )		
Renal Mixed Epithelial Cells; Normal, Human (ATCC <a href="#">PCS-400-012</a> )		
Bladder Epithelial Cells (A/T/N); Normal, Human (ATCC <a href="#">PCS-420-010</a> )	Bladder Epithelial Growth Kit (ATCC <a href="#">PCS-420-042</a> )	Bladder Epithelial Basal Medium (ATCC <a href="#">PCS-420-032</a> )
Prostate Epithelial Cells; Normal, Human (ATCC <a href="#">PCS-440-010</a> )	Prostate Epithelial Cell Growth Kit (ATCC <a href="#">PCS-440-040</a> )	Prostate Epithelial Cell Basal Medium (ATCC <a href="#">PCS-440-030</a> )
Vaginal Epithelial Cells; Normal, Human (ATCC <a href="#">PCS-480-010</a> )	Vaginal Epithelial Growth Kit (ATCC <a href="#">PCS-480-040</a> )	Vaginal Epithelial Basal Medium (ATCC <a href="#">PCS-480-030</a> )
Cervical Epithelial Cells; Normal, Human (ATCC <a href="#">PCS-480-011</a> )	Cervical Epithelial Cell Growth Kit (ATCC <a href="#">PCS-480-042</a> )	Cervical Epithelial Cell Basal Medium (ATCC <a href="#">PCS-480-032</a> )
Mammary Epithelial Cells; Normal, Human (ATCC <a href="#">PCS-600-010</a> )	Mammary Epithelial Cell Growth Kit (ATCC <a href="#">PCS-600-040</a> )	Mammary Epithelial Cell Basal Medium (ATCC <a href="#">PCS-600-030</a> )
Corneal Epithelial Cells; Normal, Human (ATCC <a href="#">PCS-700-010</a> )	Corneal Epithelial Cell Growth Kit (ATCC <a href="#">PCS-700-040</a> )	Corneal Epithelial Cell Basal Medium (ATCC <a href="#">PCS-700-030</a> )
<b>Reagents for Subculture</b>		
D-PBS (ATCC <a href="#">30-2200</a> )		
Trypsin-EDTA for Primary Cells (ATCC <a href="#">PCS-999-003</a> )		
Trypsin Neutralizing Solution (ATCC <a href="#">PCS-999-004</a> )		

\*Phenol red and antibiotics may be added if desired, and are listed in the appendix.

### PREPARATION OF COMPLETE GROWTH MEDIA

- 1 Obtain 1 Epithelial Cell Growth Kit (corresponding to the epithelial cell type being used) from the freezer; make sure that the caps of all components are tight.
- 2 Thaw the components of the growth kit just prior to adding them to the basal medium.
- 3 Obtain 1 bottle of Epithelial Cell Basal Medium (corresponding to the epithelial cell being used) from cold storage.
- 4 Decontaminate the external surfaces of all growth kit component vials and the basal medium bottle by spraying them with 70% ethanol.

- 5 Using aseptic technique and working in a laminar flow hood or biosafety cabinet, transfer the indicated volume of each growth kit component as indicated in the culture's corresponding product information sheet, to the bottle of basal medium using a separate sterile pipette for each transfer.
- 6 Tightly cap the bottle of complete growth medium and swirl the contents gently to assure a homogeneous solution. Do not shake forcefully to avoid foaming. Label and date the bottle.
- 7 Complete growth media should be stored in the dark at 2°C to 8°C (do not freeze). When stored under these conditions, complete growth media is stable for 30 days.

#### HANDLING PROCEDURE FOR FROZEN CELLS AND INITIATION OF CULTURES

- 1 Refer to the batch specific information provided on the last page of the product information sheet for the total number of viable cells recovered from each lot of ATCC Primary Human Epithelial Cells.
- 2 Using the total number of viable cells, determine how much surface area can be inoculated to achieve an initial seeding density of 5,000 cells per cm<sup>2</sup>.
- 3 Prepare the desired combination of flasks. Add 5 mL of complete growth medium per 25 cm<sup>2</sup> of surface area. Place the flasks in a 37°C, 5% CO<sub>2</sub>, humidified incubator and allow the media to pre-equilibrate to temperature and pH for 30 minutes prior to adding cells.
- 4 While the culture flasks equilibrate, remove 1 vial of ATCC Primary Human Epithelial Cells from storage and thaw the cells by gentle agitation in a 37°C water bath. To reduce the possibility of contamination, keep the O-ring and cap out of the water. Thawing should be rapid (approximately 1 to 2 minutes).
- 5 Remove the vial from the water bath as soon as the contents are thawed, and decontaminate by dipping in or spraying with 70% ethanol. All operations from this point onward should be carried out under strict aseptic conditions.
- 6 Add the appropriate volume of complete growth medium [volume = (1 mL x number of flasks to be seeded) – 1 mL] into a sterile conical tube. Using a sterile pipette, transfer the cells from the cryovial to the conical tube. Gently pipette the cells to homogenize the suspension. Do not centrifuge.
- 7 Transfer 1.0 mL of the cell suspension to each of the pre-equilibrated culture flasks prepared in steps 1 to 3 of Handling Procedure for Frozen Cells and Initiation of Cultures. Pipette several times, then cap and gently rock each flask to evenly distribute the cells.
- 8 Place the seeded culture flasks in the incubator at 37°C, 5% CO<sub>2</sub> atmosphere. Incubate for at least 24 hours before processing the cells further.

#### MAINTENANCE

- 1 Before beginning, pre-warm complete growth media in a 37°C water bath. This will take between 10 and 30 minutes, depending on the volume. If using a small volume of medium (50 mL or less), warm only the volume needed in a sterile conical tube. Avoid warming complete growth media multiple times.
- 2 24 hours after seeding, remove the cells from the incubator and view each flask under the microscope to determine percent cellular confluence.
- 3 Carefully remove the spent media without disturbing the monolayer.
- 4 Add 5 mL of fresh, pre-warmed complete growth medium per 25 cm<sup>2</sup> of surface area and return the flasks to the incubator.
- 5 After 24 to 48 hours, view each flask under the microscope to determine percent cellular confluence. If not ready to passage, repeat steps 3 and 4 as described above. When cultures have reached about 80% confluence, and are actively proliferating (many mitotic figures are visible), it is time to subculture.

#### SUBCULTURE

- 1 Passage normal human epithelial cells when the culture has reached about 80% confluence.
- 2 Warm both the Trypsin-EDTA for Primary Cells (ATCC [PCS-999-003](#)) and the Trypsin Neutralizing Solution (ATCC [PCS-999-004](#)) to room temperature prior to dissociation. Warm the complete growth medium to 37°C prior to use with the cells.
- 3 For each flask, carefully aspirate the spent media without disturbing the monolayer.
- 4 Rinse the cell layer one time with 3 to 5 mL D-PBS (ATCC [30-2200](#)) to remove residual medium.
- 5 Add pre-warmed trypsin-EDTA solution (1 to 2 mL for every 25 cm<sup>2</sup>) to each flask.
- 6 Gently rock each flask to ensure complete coverage of the trypsin-EDTA solution over the cells, and then aspirate the excess fluid off of the monolayer.
- 7 Observe the cells under the microscope. When the cells pull away from each other and round up (typically within 1 to 3 minutes), remove the flask from the microscope and gently tap it from several sides to promote detachment of the cells from the flask surface.
- 8 When the majority of cells appear to have detached, quickly add an equal volume of the Trypsin Neutralizing Solution (ATCC [PCS-999-004](#)) to each flask. Gently pipette or swirl the culture to ensure all of the trypsin-EDTA solution has been neutralized.



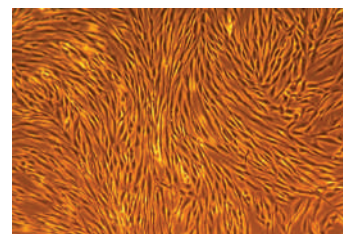
- 9 Transfer the dissociated cells to a sterile centrifuge tube and set aside while processing any remaining cells in the culture flask.
- 10 Add 3 to 5 mL D-PBS (ATCC [30-2200](#)) to the tissue culture flask to collect any additional cells that might have been left behind.
- 11 Transfer the cell/D-PBS suspension to the centrifuge tube containing the trypsin-EDTA-dissociated cells.
- 12 Repeat steps 10 and 11 as needed until all cells have been collected from the flask.
- 13 Centrifuge the cells at 150 x g for 3 to 5 minutes.
- 14 Aspirate neutralized dissociation solution from the cell pellet and resuspend the cells in 2 to 8 mL fresh, pre-warmed, complete growth medium.
- 15 Count the cells and seed new culture flasks at a density of 5,000 viable cells per cm<sup>2</sup>.
- 16 Place newly seeded flasks in a 37°C, 5% CO<sub>2</sub> incubator for at least 24 to 48 hours before processing the cells further. Refer to Maintenance for guidelines on feeding.

# ATCC PRIMARY HUMAN FIBROBLAST SOLUTIONS

## INTRODUCTION

Fibroblasts play an important role in maintaining the structural integrity of connective tissue, and synthesize extracellular matrix proteins such as collagens, glycosaminoglycans, and glycoproteins.<sup>15,16</sup> Fibroblasts are morphologically heterogeneous, and their appearance is dependent on in vivo location and activity. Injury of tissue displays a proliferative stimulus for fibroblasts and induces them to produce wound healing proteins. Fibroblasts used in primary cell culture are commonly isolated from the dermis layer of human neonatal foreskin or adult skin. They are frequently used in studies related to wound healing, tissue engineering and regeneration applications, and the induction of pluripotent stem (iPS) cells. Fibroblasts, treated with mitomycin C to inhibit proliferation, have been extensively used as feeder layers to enhance the cultivation of human stem cells and keratinocytes in vitro.

ATCC Primary Human Fibroblasts can be cultured in complete growth medium with or without serum. The use of Fibroblast Growth Kit–Serum-free creates a completely defined medium for the serum-free culture of human fibroblasts. The rate of proliferation is equal to or greater than media supplemented using FBS (at concentrations ranging from 2% to 10%) through 10 population doublings.



Primary adult human dermal fibroblasts (ATCC [PCS-201-012](#)) cultured in serum-free medium.

## CELL CULTURE PROTOCOLS

### MATERIALS NEEDED

**Table 7: Primary cells and complete growth medium**

Fibroblasts	Growth Kit Options*	Basal Medium
Dermal Fibroblasts; Normal, Human Neonatal (ATCC <a href="#">PCS-201-010</a> )	<b>Choose ONE:</b>  Fibroblast Growth Kit – Serum-free (ATCC <a href="#">PCS-201-040</a> )  Fibroblast Growth Kit – Low Serum (ATCC <a href="#">PCS-201-041</a> )	Fibroblast Basal Medium (ATCC <a href="#">PCS-201-030</a> )
Dermal Fibroblasts; Normal, Human, Adult (ATCC <a href="#">PCS-201-012</a> )		
Lung Fibroblasts; Normal, Human (ATCC <a href="#">PCS-201-013</a> )		
Gingival Fibroblasts; Normal, Human (ATCC <a href="#">PCS-201-018</a> )		
Bladder Fibroblasts; Normal, Human (ATCC <a href="#">PCS-420-013</a> )		
Uterine Fibroblast; Normal, Human (ATCC <a href="#">PCS-460-010</a> )		

#### Reagents for Subculture

D-PBS (ATCC [30-2200](#))

Trypsin-EDTA for Primary Cells (ATCC [PCS-999-003](#))

Trypsin Neutralizing Solution (ATCC [PCS-999-004](#))

\*Phenol red and antibiotics may be added if desired, and are listed in the appendix.

### PREPARATION OF COMPLETE GROWTH MEDIA

- 1 Obtain 1 growth kit from the freezer; make sure that the caps of all containers are tight.
- 2 Thaw the components of the growth kit just prior to adding them to the basal medium. It is necessary to warm the L-glutamine component in a 37°C water bath, and shake to dissolve any precipitates prior to adding to the basal medium.
- 3 Obtain 1 bottle of Fibroblast Basal Medium from cold storage.
- 4 Decontaminate the external surfaces of all growth kit component vials and the basal medium bottle by spraying them with 70% ethanol.
- 5 Using aseptic technique and working in a laminar flow hood or biosafety cabinet, transfer the volume of each growth kit component, as indicated in the following tables, to the bottle of basal medium using a separate sterile pipette for each transfer.

**Table 8: Fibroblast Growth Kit–Serum-free (ATCC PCS-201-040)**

Component	Volume	Final Concentration
L-glutamine	18.75 mL	7.5 mM
Hydrocortisone Hemisuccinate	0.5 mL	1 µg/mL
HLL Supplement	1.25 mL	HSA 500 µg/mL Linoleic Acid 0.6 µM Lecithin 0.6 µg/mL
rh FGF β	0.5 mL	5 ng/mL
rh EGF / TGF β-1 Supplement	0.5 mL	5 ng/mL 30 µg/mL
rh Insulin	0.5 mL	5 µg/mL
Ascorbic acid	0.5 mL	50 µg/mL

**Table 9: Fibroblast Growth Kit–Low Serum (ATCC PCS-201-041)**

Component	Volume	Final Concentration
rh FGF β	0.5 mL	5 ng/mL
L-glutamine	18.75 mL	7.5 mM
Ascorbic acid	0.5 mL	50 µg/mL
Hydrocortisone Hemisuccinate	0.5 mL	1 µg/mL
rh Insulin	0.5 mL	5 µg/mL
Fetal Bovine Serum	10.0 mL	2%

- Tightly cap the bottle of complete growth medium and swirl the contents gently to assure a homogeneous solution. Do not shake forcefully to avoid foaming. Label and date the bottle.
- Complete growth media should be stored in the dark at 2°C to 8°C (do not freeze). When stored under these conditions, complete growth media is stable for 30 days.

**NOTE:**

Gelatin-Coated Tissue Culture Flasks are needed to culture Mitomycin C Treated Dermal Fibroblasts (ATCC PCS-201-011) in order to achieve optimal cell attachment. Culture flasks should be prepared before thawing cells. Non-coated tissue culture flasks can also be used, if needed.

**HANDLING PROCEDURE FOR FROZEN CELLS AND INITIATION OF CULTURES**

- Refer to the batch specific information provided on the last page of the product information sheet for the total number of viable cells recovered from each lot of ATCC Primary Human Fibroblasts.
- Using the total number of viable cells reported, determine how much surface area can be inoculated to achieve an initial seeding density of 2,500 to 5,000 cells per cm<sup>2</sup> for untreated fibroblasts. Note: Mitomycin C treated fibroblasts should be seeded at a density of 20,000 to 40,000 cells per cm<sup>2</sup> for use with stem cells.
- Prepare the desired combination of flasks. Add 5mL of complete growth medium per 25 cm<sup>2</sup> of surface area. Place the flasks in a 37°C, 5% CO<sub>2</sub>, humidified incubator and allow the media to pre-equilibrate to temperature and pH for 30 minutes prior to adding cells.
- While the culture flasks equilibrate, remove 1 vial of corresponding ATCC Primary Human Fibroblasts from storage and thaw the cells by gentle agitation in a 37°C water bath. To reduce the possibility of contamination, keep the O-ring and cap out of the water. Thawing should be rapid (approximately 1 to 2 minutes).
- Remove the vial from the water bath as soon as the contents are thawed, and decontaminate by dipping in or spraying with 70% ethanol. All operations from this point onward should be carried out under strict aseptic conditions.
- Add the appropriate volume of complete growth media [volume = (1 mL x number of flasks to be seeded) – 1 mL] into a sterile conical tube. Using a sterile pipette, transfer the cells from the cryovial to the conical tube. Gently pipette the cells to homogenize the suspension. Do not centrifuge.
- Transfer 1 mL of the cell suspension to each of the pre-equilibrated culture flasks prepared in steps 1 to 3 of Handling Procedure for Frozen Cells and Initiation of Cultures. Pipette several times, then cap and gently rock each flask to evenly distribute the cells.
- Place the seeded culture flasks in the incubator at 37°C, 5% CO<sub>2</sub> atmosphere. Incubate at least 24 hours before processing the cells further.

## MAINTENANCE

- 1 Before beginning, pre-warm complete growth media in a 37°C water bath. This will take between 10 and 30 minutes, depending on the volume. If using a small volume of medium (50 mL or less), warm only the volume needed in a sterile conical tube. Avoid warming complete growth media multiple times.
- 2 24 hours after seeding, remove the cells from the incubator and view each flask under the microscope to determine percent cellular confluence.
- 3 Carefully remove the spent media without disturbing the monolayer.
- 4 Add 5 mL of fresh, pre-warmed complete growth media per 25 cm<sup>2</sup> of surface area and return the flasks to the incubator.
- 5 After 24 to 48 hours, view each flask under the microscope to determine percent cellular confluence. If not ready to passage, repeat steps 3 and 4 as described above. When cultures have reached 80% to 100% confluence, and are actively proliferating (many mitotic figures are visible), it is time to subculture. Fibroblasts are not a contact inhibited cell type.

## SUBCULTURE

- 1 Passage normal human fibroblasts when the cells have reached approximately 80% to 100% confluence and are actively proliferating.
- 2 Warm both the Trypsin-EDTA for Primary Cells (ATCC [PCS-999-003](#)) and the Trypsin Neutralizing Solution (ATCC [PCS-999-004](#)) to room temperature prior to dissociation. Warm the complete growth medium to 37°C prior to use with the cells.
- 3 For each flask, carefully aspirate the spent media without disturbing the monolayer.
- 4 Rinse the cell layer two times with 3 to 5 mL of D-PBS per 25 cm<sup>2</sup> of surface area (ATCC [30-2200](#)) to remove any residual traces of serum. Rinse the cell layer one time with 3 to 5 mL of D-PBS if serum-free culture conditions are used.
- 5 Add pre-warmed trypsin-EDTA solution (1 to 2 mL for every 25 cm<sup>2</sup>) to each flask.
- 6 Gently rock each flask to ensure complete coverage of the trypsin-EDTA solution over the cells, and then aspirate the excess fluid off of the monolayer.
- 7 Observe the cells under the microscope. When the cells pull away from each other and round up (typically within about 3 to 5 minutes), remove the flask from the microscope and gently tap it from several sides to promote detachment of the cells from the flask surface.
- 8 When the majority of cells appear to have detached, quickly add to each flask, a volume of the Trypsin Neutralizing Solution (ATCC [PCS-999-004](#)) equal to the volume of trypsin-EDTA solution used previously. Gently pipette or swirl the culture to ensure all of the trypsin-EDTA solution has been neutralized.
- 9 Transfer the dissociated cells to a sterile centrifuge tube and set aside while processing any remaining cells in the culture flask.
- 10 Add 3 to 5 mL D-PBS (ATCC [30-2200](#)) to the tissue culture flask to collect any additional cells that might have been left behind.
- 11 Transfer the cell/D-PBS suspension to the centrifuge tube containing the trypsin-EDTA-dissociated cells.
- 12 Repeat steps 10 and 11 as needed until all cells have been collected from the flask.
- 13 Centrifuge the cells at 150 x g for 3 to 5 minutes.
- 14 Aspirate the neutralized dissociation solution from the cell pellet and resuspend the cells in 2 to 8 mL fresh, pre-warmed, complete growth medium.
- 15 Count the cells and seed new culture flasks at a density of 2,500 to 5,000 cells per cm<sup>2</sup>.
- 16 Place newly seeded flasks in a 37°C, 5% CO<sub>2</sub> incubator for at least 24 to 48 hours before processing the cells further. Refer to Maintenance for guidelines on feeding.

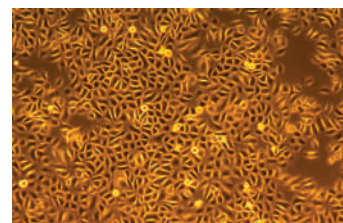
### NOTE:

Mitomycin C treated fibroblasts are mitotically arrested and cannot be subcultured.

# ATCC PRIMARY HUMAN KERATINOCYTE SOLUTIONS

## INTRODUCTION

Keratinocytes are the most common type of skin cells making up the majority of the epidermis. Dividing keratinocytes produce keratin (a protein that provides strength to skin, hair, and nails) and migrate to the surface of the skin, the stratum corneum, where they serve as the most abundant cells in the skin's outermost layer.<sup>17</sup> Once present in the stratum corneum, keratinocytes differentiate, stop dividing as cornified cells<sup>18</sup> and eventually undergo apoptosis. Keratinocytes can be isolated from different locations of the body. However, the most utilized keratinocytes in primary cell culture have been isolated from the epidermis of human juvenile foreskin or human adult skin, the latter of which is significant in the study of adult diseases such as psoriasis and skin cancer.<sup>14</sup> Keratinocytes cultured in serum-free, low calcium growth medium will maintain the cells in an un-differentiated, proliferative state while inhibiting fibroblast outgrowth. Keratinocytes are useful for a number of scientific applications including the study of growth factor behavior, wound healing, toxicity/irritancy studies, and use as target cells for derivation of induced pluripotent stem cells.



Primary Epidermal Keratinocytes; Normal, Human, Adult (ATCC [PCS-200-011](#))

## CELL CULTURE PROTOCOLS

### MATERIALS NEEDED

**Table 10: Primary cells and complete growth medium**

Keratinocytes	Growth Kit Options*	Basal Medium
Epidermal Keratinocyte; Normal, Human, Neonatal Foreskin (ATCC <a href="#">PCS-200-010</a> )	Keratinocyte Growth Kit (ATCC <a href="#">PCS-200-040</a> )	Dermal Cell Basal Medium (ATCC <a href="#">PCS-200-030</a> )
Epidermal Keratinocyte; Normal, Human, Adult (ATCC <a href="#">PCS-200-011</a> )		
Gingival Keratinocyte; Normal, Human (ATCC <a href="#">PCS-200-014</a> )		
Reagents for Subculture		
D-PBS (ATCC <a href="#">30-2200</a> )		
Trypsin-EDTA for Primary Cells (ATCC <a href="#">PCS-999-003</a> )		
Trypsin Neutralizing Solution (ATCC <a href="#">PCS-999-004</a> )		

\*Phenol red and antibiotics may be added if desired, and are listed in the appendix.

### PREPARATION OF COMPLETE GROWTH MEDIA

- 1 Obtain 1 Keratinocyte Growth Kit from the freezer; make sure that the caps of all components are tight.
- 2 Thaw the components of the growth kit just prior to adding them to the basal medium. It is necessary to warm the L-glutamine component in a 37°C water bath and shake to dissolve any precipitates prior to adding to the basal medium.
- 3 Obtain 1 bottle of Dermal Cell Basal Medium from cold storage.
- 4 Decontaminate the external surfaces of all growth kit component vials and the basal medium bottle by spraying them with 70% ethanol.
- 5 Using aseptic technique and working in a laminar flow hood or biosafety cabinet, transfer the indicated volume of each growth kit component, as indicated in the following table, to the bottle of basal medium using a separate sterile pipette for each transfer.

**Table 11: Keratinocyte Growth Kit (ATCC [PCS-200-040](#))**

Component	Volume	Final Concentration
Bovine Pituitary Extract (BPE)	2.0 mL	0.4%
rh TGF- $\alpha$	0.5 mL	0.5 ng/mL
L-Glutamine	15.0 mL	6 mM
Hydrocortisone Hemisuccinate	0.5 mL	100 ng/mL
rh Insulin	0.5 mL	5 $\mu$ g/ml
Epinephrine	0.5 mL	1.0 $\mu$ M
Apo-Transferrin	0.5 mL	5 $\mu$ g/ml

- 6 Tightly cap the bottle of complete growth medium and swirl the contents gently to assure a homogeneous solution. Do not shake forcefully to avoid foaming. Label and date the bottle.
- 7 Complete growth media should be stored in the dark at 2°C to 8°C (do not freeze). When stored under these conditions, complete growth media is stable for 30 days.



## HANDLING PROCEDURE FOR FROZEN CELLS AND INITIATION OF CULTURES

- 1 Refer to the batch specific information provided on the last page of the product information sheet for the total number of viable cells recovered from each lot of ATCC Primary Human Keratinocytes.
- 2 Using the total number of viable cells, determine how much surface area can be inoculated to achieve an initial seeding density between 2,500 and 5,000 cells per cm<sup>2</sup>.
- 3 Prepare the desired combination of flasks. Add 5 mL of complete growth medium per 25 cm<sup>2</sup> of surface area. Place the flasks in a 37°C, 5% CO<sub>2</sub>, humidified incubator and allow the media to pre-equilibrate to temperature and pH for 30 minutes prior to adding cells.
- 4 While the culture flasks equilibrate, remove 1 vial of ATCC Primary Human Keratinocytes from storage and thaw the cells by gentle agitation in a 37°C water bath. To reduce the possibility of contamination, keep the O-ring and cap out of the water. Thawing should be rapid (approximately 1 to 2 minutes).
- 5 Remove the vial from the water bath as soon as the contents are thawed, and decontaminate by dipping in or spraying with 70% ethanol. All operations from this point onward should be carried out under strict aseptic conditions.
- 6 Add the appropriate volume of complete growth medium [volume = (1 mL x number of flasks to be seeded) – 1 mL] into a sterile conical tube. Using a sterile pipette, transfer the cells from the cryovial to the conical tube. Gently pipette the cells to homogenize the suspension. Do not centrifuge.
- 7 Transfer 1.0 ml of the cell suspension to each of the pre-equilibrated culture flasks prepared in steps 1 to 3 of Handling Procedure for Frozen Cells and Initiation of Cultures. Pipette several times, then cap and gently rock each flask to evenly distribute the cells.
- 8 Place the seeded culture flasks in the incubator at 37°C, 5% CO<sub>2</sub> atmosphere. Incubate for at least 24 hours before processing the cells further.

## MAINTENANCE


- 1 Before beginning, pre-warm complete growth media in a 37°C water bath. This will take between 10 and 30 minutes, depending on the volume. If using a small volume of medium (50 mL or less), warm only the volume needed in a sterile conical tube. Avoid warming complete growth media multiple times.
- 2 24 hours after seeding, remove the cells from the incubator and view each flask under the microscope to determine percent cellular confluence.
- 3 Carefully remove the spent media without disturbing the monolayer.
- 4 Add 5 mL of fresh, pre-warmed complete growth medium per 25 cm<sup>2</sup> of surface area and return the flasks to the incubator.
- 5 After 24 to 48 hours, view each flask under the microscope to determine percent cellular confluence. If not ready to passage, repeat steps 3 and 4 as described above. When cultures have reached approximately 80% confluence, and are actively proliferating (many mitotic figures are visible), it is time to subculture. Keratinocytes will begin to terminally differentiate once they become 100% confluent.

## SUBCULTURE

- 1 Passage normal keratinocytes when the culture has reached approximately 70% to 80% confluence.
- 2 Warm both the Trypsin-EDTA for Primary Cells (ATCC [PCS-999-003](#)) and the Trypsin Neutralizing Solution (ATCC [PCS-999-004](#)) to room temperature prior to dissociation. Warm the complete growth medium to 37°C prior to use with the cells.
- 3 For each flask, carefully aspirate the spent media without disturbing the monolayer.
- 4 Rinse the cell layer one time with 3 to 5 mL D-PBS (ATCC [30-2200](#)) to remove residual medium.
- 5 Add pre-warmed trypsin-EDTA solution (1 to 2 mL for every 25 cm<sup>2</sup>) to each flask.
- 6 Gently rock each flask to ensure complete coverage of the trypsin-EDTA solution over the cells, and then aspirate the excess fluid off of the monolayer.
- 7 Observe the cells under the microscope. When the cells pull away from each other and round up (typically within 3 to 6 minutes), remove the flask from the microscope and gently tap it from several sides to promote detachment of the cells from the flask surface.
- 8 When the majority of cells appear to have detached, quickly add an equal volume of the Trypsin Neutralizing Solution (ATCC [PCS-999-004](#)) to each flask. Gently pipette or swirl the culture to ensure all of the trypsin-EDTA solution has been neutralized.
- 9 Transfer the dissociated cells to a sterile centrifuge tube and set aside while processing any remaining cells in the culture flask.
- 10 Add 3 to 5 mL D-PBS (ATCC [30-2200](#)) to the tissue culture flask to collect any additional cells that might have been left behind.
- 11 Transfer the cell/D-PBS suspension to the centrifuge tube containing the trypsin-EDTA-dissociated cells.
- 12 Repeat steps 10 and 11 as needed until all cells have been collected from the flask.
- 13 Centrifuge the cells at 150 x g for 3 to 5 minutes.

### NOTE:

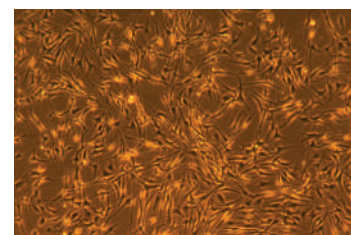
If cells are difficult to detach, incubate each flask containing cells and the trypsin-EDTA solution at 37°C to facilitate dispersal.

- 
- 14 Aspirate neutralized dissociation solution from the cell pellet and resuspend the cells in 2 to 8 mL fresh, pre-warmed, complete growth medium.
  - 15 Count the cells and seed new culture flasks at a density of 2,500 to 5,000 cells per cm<sup>2</sup>.
  - 16 Place newly seeded flasks in a 37°C, 5% CO<sub>2</sub> incubator for at least 24 to 48 hours before processing the cells further. Refer to Maintenance for guidelines on feeding.

# ATCC PRIMARY HUMAN MELANOCYTE SOLUTIONS

## INTRODUCTION

Melanocytes are found mainly in the epidermis, but may occur elsewhere in the body such as in the matrix of the hair. They are specialized skin cells that produce the pigment melanin, which gives skin its color and protects it from the hazardous effects of UV radiation. The most useful melanocytes for research are isolated from the epidermis of human juvenile foreskin or human adult skin. Special care must be taken to prevent contamination of melanocyte cultures with keratinocytes or fibroblasts found in the epidermis. Lowering the concentration of calcium in the medium to 60  $\mu$ M and selecting for adherent melanocytes in hormone-supplemented medium aids in the isolation of melanocytes from epidermal tissue.<sup>14</sup> Melanocytes are frequently used in the in vitro study of wound healing, and as testing models for toxicity/irritancy studies, melanoma, dermal response to UV radiation, psoriasis and other skin diseases, and cosmetic research (eg, skin lightening compounds, skin protecting compounds).



Adult human melanocytes (ATCC PCS-200-013).

## CELL CULTURE PROTOCOLS

### MATERIALS NEEDED

**Table 12: Primary cells and complete growth medium**

Melanocytes	Growth Kit Options	Basal Medium
Epidermal Melanocytes; Normal, Human, Neonatal (ATCC PCS-200-012)	Melanocyte Growth Kit (ATCC PCS-200-041)	Dermal Cell Basal Medium (ATCC PCS-200-030)
Epidermal Melanocytes; Normal, Human, Adult (ATCC PCS-200-013)	Adult Melanocyte Growth Kit (ATCC PCS-200-042)	

#### Reagents for Subculture

D-PBS (ATCC 30-2200)

Trypsin-EDTA for Primary Cells (ATCC PCS-999-003)

Trypsin Neutralizing Solution (ATCC PCS-999-004)

\*Phenol red and antibiotics may be added if desired, and are listed in the appendix.

### PREPARATION OF COMPLETE GROWTH MEDIA

- 1 Obtain 1 Melanocyte Growth Kit (corresponding to the melanocyte being used) from the freezer; make sure that the caps of all components are tight.
- 2 Thaw the components of the growth kit just prior to adding them to the basal medium. It is necessary to warm the L-glutamine component in a 37°C water bath and shake to dissolve any precipitates prior to adding to the basal medium.
- 3 Obtain 1 bottle of Dermal Cell Basal Medium from cold storage.
- 4 Decontaminate the external surfaces of all growth kit component vials and the basal medium bottle by spraying them with 70% ethanol.
- 5 Using aseptic technique and working in a laminar flow hood or biosafety cabinet, transfer the indicated volume of each growth kit component, as indicated in the following table, to the bottle of basal medium using a separate sterile pipette for each transfer.

**Table 13: Melanocyte Growth Kit (ATCC PCS-200-041)**

Component	Volume	Final Concentration
rh Insulin	0.5 mL	5 $\mu$ g/ml
Ascorbic Acid	0.5 mL	50 $\mu$ g/ml
L-Glutamine	15.0 mL	6 mM
Epinephrine	0.5 mL	1.0 $\mu$ M
Calcium Chloride	80 $\mu$ l	0.2 mM
M8 Supplement	5 ml	Proprietary formulation

- 6 Tightly cap the bottle of complete growth medium and swirl the contents gently to assure a homogeneous solution. Do not shake forcefully to avoid foaming. Label and date the bottle.
- 7 Complete growth media should be stored in the dark at 2°C to 8°C (do not freeze). When stored under these conditions, complete growth media is stable for 30 days.

## HANDLING PROCEDURE FOR FROZEN CELLS AND INITIATION OF CULTURES

- 1 Refer to the batch specific information provided on the last page of the product information sheet for the total number of viable cells recovered from each lot of ATCC Primary Human Melanocytes.
- 2 Using the total number of viable cells, determine how much surface area can be inoculated to achieve an initial seeding density of 5,000 cells per cm<sup>2</sup>.
- 3 Prepare the desired combination of flasks. Add 5 mL of complete growth medium per 25 cm<sup>2</sup> of surface area. Place the flasks in a 37°C, 5% CO<sub>2</sub>, humidified incubator and allow the media to pre-equilibrate to temperature and pH for 30 minutes prior to adding cells.
- 4 While the culture flasks equilibrate, remove 1 vial of ATCC Primary Human Melanocytes from storage and thaw the cells by gentle agitation in a 37°C water bath. To reduce the possibility of contamination, keep the O-ring and cap out of the water. Thawing should be rapid (approximately 1 to 2 minutes).
- 5 Remove the vial from the water bath as soon as the contents are thawed, and decontaminate by dipping in or spraying with 70% ethanol. All operations from this point onward should be carried out under strict aseptic conditions.
- 6 Add the appropriate volume of complete growth medium [volume = (1 mL x number of flasks to be seeded) – 1 mL] into a sterile conical tube. Using a sterile pipette, transfer the cells from the cryovial to the conical tube. Gently pipette the cells to homogenize the suspension. Do not centrifuge.
- 7 Transfer 1.0 ml of the cell suspension to each of the pre-equilibrated culture flasks prepared in steps 1 to 3 of Handling Procedure for Frozen Cells and Initiation of Cultures. Pipette several times, then cap and gently rock each flask to evenly distribute the cells.
- 8 Place the seeded culture flasks in the incubator at 37°C, 5% CO<sub>2</sub> atmosphere. Incubate for at least 24 hours before processing the cells further.

## MAINTENANCE

- 1 Before beginning, pre-warm complete growth media in a 37°C water bath. This will take between 10 and 30 minutes, depending on the volume. If using a small volume of medium (50 mL or less), warm only the volume needed in a sterile conical tube. Avoid warming complete growth media multiple times.
- 2 24 to 36 hours after seeding, remove the cells from the incubator and view each flask under the microscope to determine percent cellular confluence.
- 3 Carefully remove the spent media without disturbing the monolayer.
- 4 Add 5 mL of fresh, pre-warmed complete growth medium per 25 cm<sup>2</sup> of surface area and return the flasks to the incubator.
- 5 After 24 to 48 hours, view each flask under the microscope to determine percent cellular confluence. If not ready to passage, repeat steps 3 and 4 as described above. When cultures have reached 80% to 90% confluence, and are actively proliferating (many mitotic figures are visible), it is time to subculture. Melanocytes are not contact inhibited; however, they will proliferate best if the cells are passaged prior to 100% confluence. Melanocytes from lightly pigmented tissue should reach 80% confluence in 7 to 9 days.

## SUBCULTURE

- 1 Passage normal melanocytes when the culture has reached approximately 80% to 90% confluence.
- 2 Warm both the Trypsin-EDTA for Primary Cells (ATCC [PCS-999-003](#)) and the Trypsin Neutralizing Solution (ATCC [PCS-999-004](#)) to room temperature prior to dissociation. Warm the complete growth medium to 37°C prior to use with the cells.
- 3 For each flask, carefully aspirate the spent media without disturbing the monolayer.
- 4 Rinse the cell layer two times with 3 to 5 mL D-PBS (ATCC [30-2200](#)) to remove residual medium.
- 5 Add pre-warmed trypsin-EDTA solution (1 to 2 mL for every 25 cm<sup>2</sup>) to each flask.
- 6 Gently rock each flask to ensure complete coverage of the trypsin-EDTA solution over the cells, and then aspirate the excess fluid off of the monolayer.
- 7 Observe the cells under the microscope. When the cells pull away from each other and round up (typically within 1 to 3 minutes), remove the flask from the microscope and gently tap it from several sides to promote detachment of the cells from the flask surface.
- 8 When the majority of cells appear to have detached, quickly add an equal volume of the Trypsin Neutralizing Solution (ATCC [PCS-999-004](#)) to each flask. Gently pipette or swirl the culture to ensure all of the trypsin-EDTA solution has been neutralized.
- 9 Transfer the dissociated cells to a sterile centrifuge tube and set aside while processing any remaining cells in the culture flask.
- 10 Add 3 to 5 mL D-PBS (ATCC [30-2200](#)) to the tissue culture flask to collect any additional cells that might have been left behind.
- 11 Transfer the cell/D-PBS suspension to the centrifuge tube containing the trypsin-EDTA-dissociated cells.
- 12 Repeat steps 10 and 11 as needed until all cells have been collected from the flask.

### NOTE:

Melanocytes are sensitive to over-trypsinization.

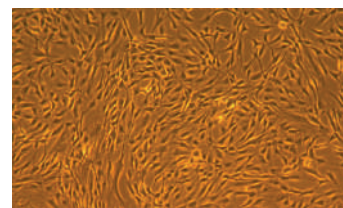
- 13 Centrifuge the cells at 150 x g for 3 to 5 minutes.
- 14 Aspirate neutralized dissociation solution from the cell pellet and resuspend the cells in 2 to 8 mL fresh, pre-warmed, complete growth medium.
- 15 Count the cells and seed new culture flasks at a density of 2,500 to 5,000 cells per cm<sup>2</sup>.
- 16 Place newly seeded flasks in a 37°C, 5% CO<sub>2</sub> incubator for at least 24 to 48 hours before processing the cells further. Refer to Maintenance for guidelines on feeding.



# ATCC HUMAN MESENCHYMAL STEM CELL AND DIFFERENTIATION SOLUTIONS

## INTRODUCTION

ATCC Human Mesenchymal Stem Cells (MSCs) are self-renewing multipotent adult stem cells. MSCs are traditionally found in the bone marrow, but can also be isolated from other tissues including adipose, human umbilical cord or cord blood, and peripheral blood. Adipose-derived mesenchymal stem cells are isolated from human adipose (fat) tissues by lipoaspiration or biopsy. Umbilical cord derived mesenchymal stem cells are isolated from Wharton's Jelly found in human umbilical cord. Although MSCs from primary adipose tissue and Wharton's Jelly are considered to be relatively easy to obtain, isolation of consistent stem cell populations from such material is costly and time-consuming. Lipoaspirates and umbilical cord tissue represent a heterogeneous mixture of cell types, including adipocytes, endothelial cells, smooth muscle, pericytes and progenitor cells.<sup>2</sup> The inherent heterogeneity of this source material, then, yields a high potential for cellular contamination to predominate cultures.

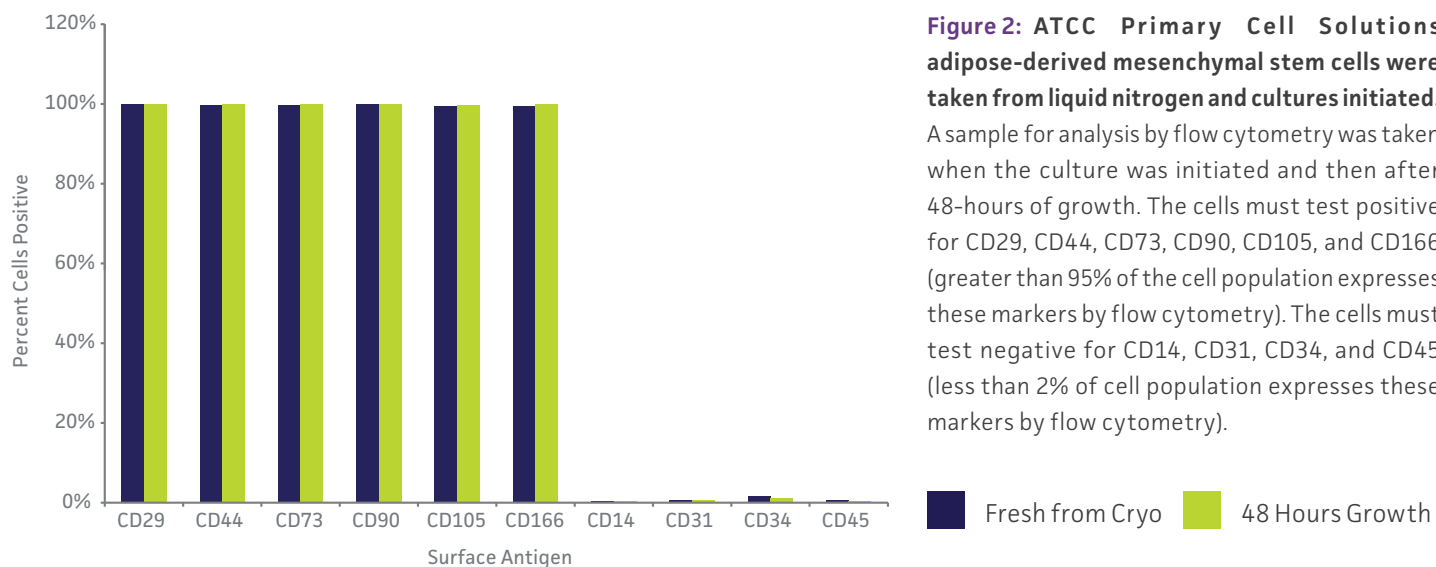


Adipose-Derived Mesenchymal Stem Cells; Normal, Human (ATCC PCS-500-011).

To ensure the purity of ATCC Primary Cell Solutions Normal Human Mesenchymal Stem Cells, each batch is isolated from single-donor tissue, cryopreserved in the second passage, and tested for:

- 1 Authentication of growth and morphology, including adherence to plastic when cultured in optimized growth medium consisting of Mesenchymal Stem Cell Basal Medium (ATCC PCS-500-030) supplemented with Mesenchymal Stem Cell Growth Kit-Low Serum (ATCC PCS-500-040)
- 2 Verification of surface antigen expression,<sup>13</sup> including a total of 10 markers: Positive ( $\geq 95\%$ ) for CD29, CD44, CD73, CD90, CD105, and CD166; and, negative ( $\geq 2\%$ ) for CD14, CD31, CD34, and CD45
- 3 Confirmation of multi-lineage differentiation into osteoblasts, adipocytes, and chondrocytes using optimized differentiation kits and protocols

MSCs are useful tools for non-controversial stem cell differentiation research and for the creation of induced pluripotent stem (iPS) cell lines.<sup>8</sup> MSCs have also found applications in tissue engineering,<sup>3,5,11,14</sup> cell therapy,<sup>12</sup> and regenerative medicine.<sup>6,7,9,10</sup>



**Figure 2: ATCC Primary Cell Solutions adipose-derived mesenchymal stem cells were taken from liquid nitrogen and cultures initiated.**

A sample for analysis by flow cytometry was taken when the culture was initiated and then after 48-hours of growth. The cells must test positive for CD29, CD44, CD73, CD90, CD105, and CD166 (greater than 95% of the cell population expresses these markers by flow cytometry). The cells must test negative for CD14, CD31, CD34, and CD45 (less than 2% of cell population expresses these markers by flow cytometry).

# CELL CULTURE PROTOCOLS

## MATERIALS NEEDED

**Table 14: Primary cells and complete growth medium**

Mesenchymal Stem Cells	Growth Kit Options	Basal Medium
Adipose-Derived Mesenchymal Stem Cells; Normal, Human (ATCC <a href="#">PCS-500-011</a> )		
Umbilical Cord-Derived Mesenchymal Stem Cells; Normal, Human (ATCC <a href="#">PCS-500-010</a> )	Mesenchymal Stem Cell Growth Kit-Low Serum(ATCC <a href="#">PCS-500-040</a> )	Mesenchymal Stem Cell Basal Medium (ATCC <a href="#">PCS-500-030</a> )
Mesenchymal Stem Cells, Bone-Marrow Derived; Normal, Human (ATCC <a href="#">PCS-500-012</a> )		
Subcutaneous Pre-adipocytes; Normal, Human (ATCC <a href="#">PCS-210-010</a> )	Fibroblast Growth Kit-Low Serum (ATCC <a href="#">PCS-201-041</a> )	Fibroblast Basal Medium (ATCC <a href="#">PCS-201-030</a> )
<b>Reagents for Subculture</b>		
D-PBS (ATCC <a href="#">30-2200</a> )		
Trypsin-EDTA for Primary Cells (ATCC <a href="#">PCS-999-003</a> )		
Trypsin Neutralizing Solution (ATCC <a href="#">PCS-999-004</a> )		

## PREPARATION OF COMPLETE GROWTH MEDIA

- 1 Obtain 1 Mesenchymal Stem Cell Growth Kit–Low Serum from the freezer; make sure that the caps of all components are tight.
- 2 Thaw the components of the growth kit just prior to adding them to the basal medium.
- 3 Obtain 1 bottle of Mesenchymal Stem Cell Basal Medium from cold storage.
- 4 Decontaminate the external surfaces of all growth kit component vials and the basal medium bottle by spraying them with 70% ethanol.
- 5 Using aseptic technique and working in a laminar flow hood or biosafety cabinet, transfer the indicated volume of each growth kit component, as indicated in the following table, to the bottle of basal medium using a separate sterile pipette for each transfer.

**Table 15: Mesenchymal Stem Cell Growth Kit–Low Serum (ATCC [PCS-500-040](#))**

Component	Volume	Final Concentration
MSC Supplement	10 mL	2% FBS 5 ng/mL rh FGF basic 5 ng/mL rh FGF acidic 5 ng/mL rh EGF
L-Alanyl-L-Glutamine	6 mL	2.4 mM

- 6 Tightly cap the bottle of complete growth medium and swirl the contents gently to assure a homogeneous solution. Do not shake forcefully to avoid foaming. Label and date the bottle.
- 7 Complete growth media should be stored in the dark at 2°C to 8°C (do not freeze). When stored under these conditions, complete growth media is stable for 2 weeks.

## HANDLING PROCEDURE FOR FROZEN CELLS AND INITIATION OF CULTURES

- 1 Refer to the batch specific information provided on the last page of the product information sheet for the total number of viable cells recovered from each lot of ATCC Human Mesenchymal Stem Cells.
- 2 Using the total number of viable cells, determine how much surface area can be inoculated to achieve an initial seeding density of 5,000 cells per cm<sup>2</sup>.
- 3 Prepare the desired combination of flasks. Add 5 mL of complete growth medium per 25 cm<sup>2</sup> of surface area. Place the flasks in a 37°C, 5% CO<sub>2</sub>, humidified incubator and allow the media to pre-equilibrate to temperature and pH for 30 minutes prior to adding cells.
- 4 While the culture flasks equilibrate, remove 1 vial of ATCC Human Mesenchymal Stem Cells from storage and thaw the cells by gentle agitation in a 37°C water bath. To reduce the possibility of contamination, keep the O-ring and cap out of the water. Thawing should be rapid (approximately 1 to 2 minutes).
- 5 Remove the vial from the water bath as soon as the contents are thawed, and decontaminate by dipping in or spraying with 70% ethanol. All operations from this point onward should be carried out under strict aseptic conditions.
- 6 Add the appropriate volume of complete growth medium [volume = (1 mL x number of flasks to be seeded) – 1 mL] into a sterile conical tube. Using a sterile pipette, transfer the cells from the cryovial to the conical tube. Gently pipette the cells to homogenize the suspension. Do not centrifuge.
- 7 Transfer 1.0 ml of the cell suspension to each of the pre-equilibrated culture flasks prepared in steps 1 to 3 of Handling Procedure for Frozen Cells and Initiation of Cultures. Pipette several times, then cap and gently rock each flask to evenly distribute the cells.

- Place the seeded culture flasks in the incubator at 37°C, 5% CO<sub>2</sub> atmosphere. Incubate for at least 24 hours before processing the cells further.

## MAINTENANCE

- Before beginning, pre-warm complete growth media in a 37°C water bath. This will take between 10 and 30 minutes, depending on the volume. If using a small volume of medium (50 mL or less), warm only the volume needed in a sterile conical tube. Avoid warming complete growth media multiple times.
- 24 hours after seeding, remove the cells from the incubator and view each flask under the microscope to determine percent cellular confluence.
- Carefully remove the spent media without disturbing the monolayer.
- Add 5 mL of fresh, pre-warmed complete growth medium per 25 cm<sup>2</sup> of surface area and return the flasks to the incubator.
- After 24 to 48 hours, view each flask under the microscope to determine percent cellular confluence. If not ready to passage, repeat steps 3 and 4 as described above. When cultures have reached approximately 70% to 80% confluence, and are actively proliferating (many mitotic figures are visible), it is time to subculture.

### NOTE:

Adipose- and umbilical cord-derived stem cells are contact inhibited. It is essential that the cells be subcultured BEFORE reaching confluence as post-confluent cells exhibit changes in morphology, slower proliferation, and reduced differentiation capacity after passaging.

## SUBCULTURE

- Passage normal mesenchymal stem cells when the culture has reached approximately 70% to 80% confluence.
- Warm both the Trypsin-EDTA for Primary Cells (ATCC [PCS-999-003](#)) and the Trypsin Neutralizing Solution (ATCC [PCS-999-004](#)) to room temperature prior to dissociation. Warm the complete growth medium to 37°C prior to use with the cells.
- For each flask, carefully aspirate the spent media without disturbing the monolayer.
- Rinse the cell layer one time with 3 to 5 mL D-PBS (ATCC [30-2200](#)) to remove residual medium.
- Add pre-warmed trypsin-EDTA solution (1 to 2 mL for every 25 cm<sup>2</sup>) to each flask.
- Gently rock each flask to ensure complete coverage of the trypsin-EDTA solution over the cells, and then aspirate the excess fluid off of the monolayer.
- Observe the cells under the microscope. When the cells pull away from each other and round up (typically within 1 to 3 minutes), remove the flask from the microscope and gently tap it from several sides to promote detachment of the cells from the flask surface.
- When the majority of cells appear to have detached, quickly add an equal volume of the Trypsin Neutralizing Solution (ATCC [PCS-999-004](#)) to each flask. Gently pipette or swirl the culture to ensure all of the trypsin-EDTA solution has been neutralized.
- Transfer the dissociated cells to a sterile centrifuge tube and set aside while processing any remaining cells in the culture flask.
- Add 3 to 5 mL D-PBS (ATCC [30-2200](#)) to the tissue culture flask to collect any additional cells that might have been left behind.
- Transfer the cell/D-PBS suspension to the centrifuge tube containing the trypsin-EDTA-dissociated cells.
- Repeat steps 10 and 11 as needed until all cells have been collected from the flask.
- Centrifuge the cells at 150 x g for 3 to 5 minutes.
- Aspirate neutralized dissociation solution from the cell pellet and resuspend the cells in 2 to 8 mL fresh, pre-warmed, complete growth medium.
- Count the cells and seed new culture flasks at a density of 5,000 viable cells per cm<sup>2</sup>.
- Place newly seeded flasks in a 37°C, 5% CO<sub>2</sub> incubator for at least 24 to 48 hours before processing the cells further. Refer to Maintenance for guidelines on feeding.

# ADIPOSE-DERIVED MESENCHYMAL STEM CELL DIFFERENTIATION PROTOCOLS

## ADIPOCYTE DIFFERENTIATION

### MATERIALS NEEDED

The Adipocyte Differentiation Toolkit (ATCC [PCS-500-050](#)) contains medium and reagents designed to induce adipogenesis in actively proliferating Adipose-Derived Mesenchymal Stem Cells (ATCC [PCS-500-011](#)) with high efficiency, and support maturation of derived adipocytes during lipid accumulation.

### PREPARING CELLS FOR ADIPOCYTE DIFFERENTIATION

- Follow the instructions for the growth of Adipose-Derived Mesenchymal Stem Cells (ATCC [PCS-500-011](#)). It is recommended that the cells not be passaged more than four (4) times before initiating adipocyte differentiation.
- When cells are 70-80% confluent, passage them into a tissue culture plate at a density of 18,000 cells/ cm<sup>2</sup>. Adjust the number of cells and volume of media according to the tissue culture plate used.

Example: For a 6-well tissue culture plate with a surface area of 9.5 cm<sup>2</sup>/well, add a total of 171,000 viable cells to each well containing 2 mL of Mesenchymal Stem Cell Basal Medium (ATCC [PCS-500-030](#)) supplemented with Mesenchymal Stem Cell Growth Kit–Low Serum (ATCC [PCS-500-040](#)) components.

- 3 Gently rock the plate back and forth and side to side to evenly distribute cells before incubation. Do not swirl.
- 4 Incubate the cells at 37°C with 5% CO<sub>2</sub> for 48 hours before initiating adipocyte differentiation.

### ADIPOCYTE DIFFERENTIATION MEDIA PREPARATION

The adipocyte differentiation process requires **two** separate media preparations: one for initiation and one for maintenance. Stock solutions of these media can be prepared in tandem in advance as follows:

- 1 Thaw all three components of the differentiation kit and warm to 37°C in a water bath.
- 2 Decontaminate the external surfaces of all three kit components by spraying them with 70% ethanol.
- 3 Using aseptic technique and working in a laminar flow hood or biosafety cabinet:
  - a Transfer 15 mL of Adipocyte Basal Medium and 1 mL of AD Supplement to a sterile 50 mL conical tube, using a separate sterile pipette for each transfer. This is your working stock of **Adipocyte Differentiation Initiation Medium** used during the first 96 hours of differentiation.
  - b Add 5 mL of ADM Supplement to the remaining 85 mL of Adipocyte Basal Medium. This is your working stock of **Adipocyte Differentiation Maintenance Medium**.
- 4 Tightly cap the each container of media and swirl the contents gently to assure a homogeneous solution. Do not shake forcefully to avoid foaming. Label and date the bottle.
- 5 Each container of differentiation medium should be stored in the dark at 2°C to 8°C (do not freeze). When stored under these conditions, the differentiation media is stable for up to three weeks.

#### NOTE:

It may be necessary to shake the AD Supplement and the ADM Supplement upon warming to help re-dissolve any components that may have precipitated out of solution upon freezing.

### ADIPOCYTE DIFFERENTIATION PROCEDURE

#### A Initiation Phase

- 1 After incubating the prepared Adipose-Derived Mesenchymal Stem Cells for (as described above), carefully aspirate the media from the wells.
- 2 Immediately rinse the cells once by adding 2 mL of room-temperature D-PBS (ATCC [30-2200](#)) to each well, then carefully aspirate the PBS from the wells.
- 3 Add 2 mL of pre-warmed (37°C) **Adipocyte Differentiation Initiation Medium** to each well to begin the adipocyte differentiation process.
- 4 Incubate the cells at 37°C with 5% CO<sub>2</sub> for 48 hours.
- 5 Feed the cells by carefully removing half the volume of media (1 mL) from each well and adding another 2 mL of pre-warmed (37°C) **Adipocyte Differentiation Initiation Medium** to each well.

**Important:** DO NOT TILT plate during aspiration. It is important that the cell monolayer is not exposed to air during this and subsequent steps to ensure that developing lipid vesicles do not burst.

#### B Maintenance Phase

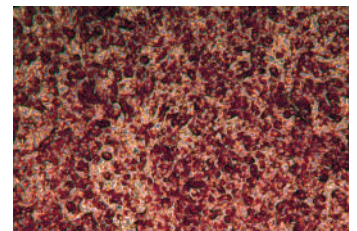
- 6 Incubate the cells at 37°C with 5% CO<sub>2</sub> for 48 hours.
- 7 Carefully remove 2 mL of media from each well (leaving 1 mL) and replace with 2 mL of pre-warmed (37°C) **Adipocyte Differentiation Maintenance Medium** in each well.

**Important:** DO NOT TILT plate during aspiration. It is important that the cell monolayer is not exposed to air during this and subsequent steps to ensure that developing lipid vesicles do not burst.

- 8 Repeat Steps 6 and 7 every 3-4 days for another 11 days until adipocytes reach full maturity. (Full maturity will be reached 15 days after the beginning of initiation phase, or 17 days from initial plating of cells.)
- 9 Cells can be used at any phase of adipocyte differentiation as predicated upon experimental design. To confirm lipid accumulation, cells can be fixed and stained with Oil Red O.

#### NOTE:

It is recommended that you transfer the required volume of media to a sterile tube for pre-warming prior to each feeding rather than repeatedly re-warming the entire working stock.



Adipocytes differentiated from Adipose-derived Mesenchymal Stem Cells (ATCC [PCS-500-011](#)) and stained with Oil Red O to detect the formation of lipid droplets.

**Additional differentiation protocols, including Chondrocyte and Osteocyte differentiation of Adipose-derived Mesenchymal Stem Cells, are available online at [www.atcc.org](http://www.atcc.org).**

# REFERENCES

- 1 Stein GS, et al. Human Stem Cell Technology and Biology: A Research Guide and Laboratory Manual. Wiley & Sons, Hoboken, New Jersey, 2011.
- 2 Zuk PA, et al. Multilineage Cells from Human Adipose Tissue: Implications for Cell-Based Therapies. *Tissue Eng.* 7(2):211-228, 2001.
- 3 Zuk PA, et al. Human adipose tissue is a source of multipotent stem cells. *Mol. Biol. Cell.* 13:4279-4295, 2002.
- 4 Ogawa R. The Importance of Adipose-Derived Stem Cell and Vascularized Tissue Regeneration in the Field of Tissue Transplantation. *Cur. Stem Cell Res.* 1:13-20, 2006.
- 5 Shaeffler A & Buechler C. Concise review: adipose tissue-derived stromal cells—basic and clinical applications for novel cell-based therapies. *Stem Cells* 25:818-827, 2007.
- 6 Kang SK, et al. Neurogenesis of Rhesus adipose stromal cells. *J. Cell Sci.* 117:4289-4299, 2004.
- 7 Safford KM, et al. Stem cell therapy for neurologic disorders: Therapeutic potential of adipose-derived stem cells. *Current Drug Targets* 6:57-62, 2005.
- 8 Safford KM, et al. Characterization of neuronal/glial differentiation of murine adipose-derived adult stromal cells. *Exp. Neurol.* 187:319-328, 2004.
- 9 Kingham PJ, et al. Adipose-derived stem cells differentiate into a Schwann cell phenotype and promote neurite outgrowth in vitro. *Exp. Neurol.* 207:267-274, 2007.
- 10 Xu, et al. Myelin-forming ability of Schwann cell-like cells induced from rat adipose-derived stem cells in vitro. *Brain Res.* 1239:49-55, 2008.
- 11 Seo MJ, et al. Differentiation of human adipose stromal cells into hepatic lineage in vitro and in vivo. *Biochem. Biophys. Res. Commun.* 328:258-264, 2005.
- 12 Timper K, et al. Human adipose tissue-derived mesenchymal stem cells differentiate into insulin, somatostatin, and glucagon expressing cells. *Biochem. Biophys. Res. Commun.* 341:1135-1140, 2006.
- 13 Dominici M, et al. Minimal criteria for defining multipotent mesenchymal stromal cells: The International Society for Cellular Therapy position statement. *Cytotherapy* 8(4):315-317, 2006.
- 14 Freshney, RI. *Culture of Animal Cells: A Manual of Basic Technique*, 6th Ed. John Wiley & Sons, Hoboken, New Jersey, 2010.
- 15 Histology Text Atlas Book. Chapter 3: Connective Tissue. Downloaded from Visual Histology.com at [http://www.visualhistology.com/products/atlas/VHA\\_Chpt3\\_Connective\\_Tissue.html](http://www.visualhistology.com/products/atlas/VHA_Chpt3_Connective_Tissue.html) on March 26, 2012.
- 16 Elias JA, et al. Regulation of Human Lung Fibroblast Glycosaminoglycan Production by Recombinant Interferons, Tumor Necrosis Factor, and Lymphotoxin. *J. Clin. Invest.* 81:325-333, 1988.
- 17 Rieger MM. Keratinocyte function and skin health. *Cosmetics and Toiletries*, July 01, 1992. Downloaded on March 26, 2012 from Access My Library at [www.accessmylibrary.com/article/print/1G1-12484573](http://www.accessmylibrary.com/article/print/1G1-12484573).
- 18 Bensouilah J, et al. *Aromadermatology: Aromatherapy in the Treatment and Care of Common Skin Conditions*. Blackwell Publishers, 2006. Chapter 1 downloaded on March 26, 2012 at [www.courses.washington.edu/bioen327/Labs/Lit\\_SkinStruct\\_Bensouillah\\_Ch01.pdf](http://www.courses.washington.edu/bioen327/Labs/Lit_SkinStruct_Bensouillah_Ch01.pdf).

## Have Questions?

Search ATCC Frequently Asked Questions online at [www.atcc.org](http://www.atcc.org) for answers related to primary cells, or contact ATCC Technical Services at [Tech@atcc.org](mailto:Tech@atcc.org) for additional information.



Table 16: ATCC Primary Cells and Needed Reagents

All of these ATCC primary cells products are human species and require the following reagents: Phenol Red (ATCC [PCS-999-001](#)); D-PBS (ATCC [30-2200](#)); Trypsin-EDTA for Primary Cells (ATCC [PCS-999-003](#)); Trypsin Neutralizing Solution (ATCC [PCS-999-004](#)).

Product Name (ATCC number)	Applications	Number of viable cells-post thaw	Passage at freezing	Cells tested upon thaw to achieve	Basal media	Growth kit	Additional Reagents		
Endothelial Cells									
Umbilical Vein Endothelial Cells; Normal, Human (PCS-100-010)	Physiological and pharmacological investigations, such as macromolecule transport, blood coagulation, angiogenesis, and fibrinolysis	≥5.0 x 10 <sup>5</sup>	1	≥15 PDL	Vascular Cell Basal Medium (PCS-100-030)	Endothelial Cell Growth Kit-BBE (PCS-100-040) or Endothelial Cell Growth Kit-VEGF (PCS-100-041)	Not applicable		
Umbilical Vein Endothelial Cells; Normal, Human, Pooled (PCS-100-013)		≥5.0 x 10 <sup>5</sup>	2	≥15 PDL					
Aortic Endothelial Cells; Normal, Human (PCS-100-011)	Studies of vascular diseases such as thrombosis, atherosclerosis, metabolism, and hypertension, stent-graft compatibility testing, and membrane conductance models	≥5.0 x 10 <sup>5</sup>	2	≥15 PDL					
Coronary Artery Endothelial Cells; Normal, Human (PCS-100-020)		≥5.0 x 10 <sup>5</sup>	3	≥15 PDL					
Pulmonary Artery Endothelial Cells; Normal, Human (PCS-100-022)		≥5.0 x 10 <sup>5</sup>	3	≥15 PDL					
Dermal Microvascular Endothelial Cells; Normal, Human, Neonatal (PCS-110-010)	Studies of microvascular functions and cutaneous inflammation	≥5.0 x 10 <sup>5</sup>	3	≥15 PDL	Vascular Cell Basal Medium (PCS-100-030)	Microvascular Endothelial Cell Growth Kit-BBE (PCS-110-040) or Microvascular Endothelial Cell Growth Kit-VEGF (PCS-110-041)			
Smooth Muscle Cells									
Aortic Smooth Muscle Cells; Normal, Human (PCS-100-012)	Studies of vascular diseases, such as thrombosis and atherosclerosis	≥5.0 x 10 <sup>5</sup>	2	≥15 PDL	Vascular Cell Basal Medium (PCS-100-030)	Vascular Smooth Muscle Cell Growth Kit (PCS-100-042)	Not applicable		
Coronary Artery Smooth Muscle Cells; Normal, Human (PCS-100-021)		≥5.0 x 10 <sup>5</sup>	2	≥15 PDL					
Pulmonary Artery Smooth Muscle Cells; Normal, Human (PCS-100-023)		≥5.0 x 10 <sup>5</sup>	2	≥15 PDL					
Lung Smooth Muscle Cells; Normal, Human (PCS-130-010)		≥5.0 x 10 <sup>5</sup>	2	>15 PDL					
Bronchial/Tracheal Smooth Muscle Cells; Normal, Human (PCS-130-011)		≥5.0 x 10 <sup>5</sup>	2	>15 PDL					
Bladder Smooth Muscle Cells; Normal, Human (PCS-420-012)		≥5.0 x 10 <sup>5</sup>	2	>15 PDL					
Uterine Smooth Muscle Cells; Normal, Human (PCS-460-010)		≥5.0 x 10 <sup>5</sup>	2	>15 PDL					
Epithelial Cells									
Small Airway Epithelial Cells; Normal, Human (PCS-301-010)	Asthma, airway inflammation, and wound healing, pulmonary fibrosis, COPD, cancer, toxicology, intracellular pH regulations, IL-1b effect to stimulate airway epithelial cell growth, and ICAM-1 expression	≥5.0 x 10 <sup>5</sup>	1	≥15 PDL	Airway Epithelial Cell Basal Medium (PCS-300-030)	Small Airway Epithelial Cell Growth Kit (PCS-301-040) or Bronchial Epithelial Cell Growth kit (PCS-300-040)			
Bronchial/Tracheal Epithelial Cells; Normal, Human (PCS-300-010)		≥5.0 x 10 <sup>5</sup>	1	≥15 PDL					
Lobar Bronchial Epithelial Cells; Normal, Human (PCS-300-015)	Asthma, airway inflammation, and wound healing, pulmonary fibrosis, COPD, cancer, toxicology, intracellular pH regulations, IL-1b effect to stimulate airway epithelial cell growth, and ICAM-1 expression	≥5.0 x 10 <sup>5</sup>	1	>10 PDL	Airway Epithelial Cell Basal Medium (PCS-300-030)	Bronchial Epithelial Cell Growth Kit (PCS-300-040)			
Renal Proximal Tubule Epithelial Cells; Normal, Human (PCS-400-010)	In vitro studies of osmoregualtion and excretion, renal fibrosis, inflammation, as well as applications in drug screening/development, eg, hypertension, diabetes, oncology, autoimmune disease, and toxicology screening	≥5.0 x 10 <sup>5</sup>	2	≥15 PDL	Renal Epithelial Cell Basal Medium (PCS-400-030)	Renal Epithelial Cell Growth Kit (PCS-400-040)			
Renal Cortical Epithelial Cells; Normal, Human (PCS-400-011)		≥5.0 x 10 <sup>5</sup>	1	≥15 PDL					
Renal Mixed Epithelial Cells; Normal, Human (PCS-400-012)		≥5.0 x 10 <sup>5</sup>	1	≥15 PDL					
Bladder Epithelial Cells (A/T/N); Normal, Human (PCS-420-010)	Incontinence and reconstruction studies or development of a potential diagnostic method for the early detection of bladder cancer cells	≥5.0 x 10 <sup>5</sup>	2	>15 PDL	Bladder Epithelial Basal Medium (PCS-420-032)	Bladder Epithelial Growth Kit (PCS-420-042)	Not applicable		
Prostate Epithelial Cells; Normal, Human (PCS-440-010)	Hormonal regulation of the prostate, the secretory function of prostate cells, and prostate cancer	≥5.0 x 10 <sup>5</sup>	2	≥15 PDL	Prostate Epithelial Cell Basal Medium (PCS-440-030)	Prostate Epithelial Cell Growth Kit (PCS-440-040)			
Vaginal Epithelial Cells; Normal, Human (PCS-480-010)	Cancer studies, microbiological organism to cell interaction, toxicity studies	≥5.0 x 10 <sup>5</sup>	3	>10 PDL	Vaginal Epithelial Basal Medium (PCS-480-030)	Vaginal Epithelial Growth Kit (PCS-480-040)			
Cervical Epithelial Cells; Normal, Human (PCS-480-011)	Pathophysiology of cervical polyps, HPV, and cervical cancer	≥5.0 x 10 <sup>5</sup>	3	>10 PDL	Cervical Epithelial Cell Basal Medium (PCS-480-032)	Cervical Epithelial Cell Growth Kit (PCS-480-042)			
Mammary Epithelial Cells; Normal, Human (PCS-600-010)	Breast cancer development, and 3-D culture and carcinogen screening	≥5.0 x 10 <sup>5</sup>	3	>15 PDL	Mammary Epithelial Cell Basal Medium (PCS-600-030)	Mammary Epithelial Cell Growth Kit (PCS-600-040)			
Corneal Epithelial Cells; Normal, Human (PCS-700-010)	Cell de-differentiation, toxicology testing, and drug development	≥5.0 x 10 <sup>5</sup>	2	3 passages	Corneal Epithelial Cell Basal Medium (PCS-700-030)	Corneal Epithelial Cell Growth Kit (PCS-700-040)			
Fibroblasts									
Dermal Fibroblasts; Normal, Human Neonatal (PCS-201-010)	Wound healing studies, tissue engineering and regeneration applications, as well as induction of pluripotent stem (iPSCs)	≥5.0 x 10 <sup>5</sup>	1	≥10 PDL in serum-free medium	Fibroblast Basal Medium (PCS-201-030)	Fibroblast Growth Kit–Serum-Free (PCS-201-040) or Fibroblast Growth Kit–Low Serum (PCS-201-041)	0.1% Gelatin Solution (PCS-999-027) only for use with Mitomicin C treated Dermal Fibroblasts		
Dermal Fibroblasts; Normal, Human Adult (PCS-201-012)	Wound healing studies, tissue engineering and regeneration applications, as well as induction of pluripotent stem (iPSCs)	≥5.0 x 10 <sup>5</sup>	1	≥10 PDL in serum-free medium					
Lung Fibroblasts; Normal, Human (PCS-201-013)	Lung disorders and infections, lung reconstruction studies, and advancement of cancer research	≥5.0 x 10 <sup>5</sup>	2	>15 PDL					
Gingival Fibroblasts; Normal, Human (PCS-201-018)	Regenerative medicine studies, alternate source of MSCs	≥5.0 x 10 <sup>5</sup>	2	>15 PDL			Not applicable		
Bladder Fibroblasts; Normal, Human (PCS-420-013)	Detection of bladder cancer cells, reconstruction studies, and advancement of cancer research	≥5.0 x 10 <sup>5</sup>	2	>15 PDL					
Uterine Fibroblast; Normal, Human (PCS-460-010)	Research related to female reproductive biology, drug testing, and oncology	≥5.0 x 10 <sup>5</sup>	2	>15 PDL					
Keratinocytes									
Epidermal Keratinocytes; Normal, Human, Neonatal Foreskin (PCS-200-010)	Studies of growth factor activity, wound healing, toxicity/irritancy studies, and use as target cells for derivation of induced pluripotent stem cells	≥5.0 x 10 <sup>5</sup>	1	≥15 PDL	Dermal Cell Basal Medium (PCS-200-030)	Keratinocyte Growth Kit (PCS-200-040)	Not applicable		
Epidermal Keratinocytes; Normal, Human, Adult (PCS-200-011)		≥5.0 x 10 <sup>5</sup>	1	≥15 PDL					
Gingival Keratinocytes; Normal, Human (PCS-200-014)	Antibiotic treatment, dental implants, and many other applications for oral biology research	≥5.0 x 10 <sup>5</sup>	2	>15 PDL					
Melanocytes									
Epidermal Melanocytes; Normal, Human, Neonatal Foreskin (PCS-200-012)	Wound healing, testing models for toxicity/irritancy studies, melanoma, dermal response to UV radiation, psoriasis and other skin diseases, and cosmetic research	≥5.0 x 10 <sup>5</sup>	2	≥15 PDL	Dermal Cell Basal Medium (PCS-200-030)	Melanocyte Growth Kit (PCS-200-041)	Not applicable		
Epidermal Melanocytes; Normal, Human, Adult (PCS-200-013)		≥5.0 x 10 <sup>5</sup>	2	≥15 PDL					
Mesenchymal Stem Cells									
Umbilical Cord-Derived Mesenchymal Stem Cells; Normal, Human (PCS-500-010)	Adult stem cell differentiation research, induced pluripotent stem cell lines, tissue engineering, cell therapy, and regenerative medicine	≥5.0 x 10 <sup>5</sup>	2	≥10 PDL	Mesenchymal Stem Cell Basal Medium (PCS-500-030)	Mesenchymal Stem Cell Growth Kit-Low Serum (PCS-500-040)	Adipocyte Differentiation Tool (PCS-500-050)		
Adipose-Derived Mesenchymal Stem Cells; Normal, Human (PCS-500-011)		≥1.0 x 10 <sup>6</sup>	2	≥10 PDL			Chondrocyte Differentiation Tool (PCS-500-051)		
	Osteocyte Differentiation Tool (PCS-500-052)								
Bone Marrow–Derived Mesenchymal Stem Cells; Normal, Human (PCS-500-012)	Useful as an in vitro model for the study of multipotent stem cell biology, differentiation, and regenerative medicine and tissue engineering	≥1.0 x 10 <sup>6</sup>	2	≥10 PDL		Mesenchymal Stem Cell Growth Kit for Bone Marrow MSCs (PCS-500-041)	Adipocyte Differentiation Toolkit for BM-MSCs (PCS-500-053)		
Primary Subcutaneous Preadipocytes; Normal, Human (PCS-210-010)	Differentiation research, tissue engineering, cell therapy, and regenerative medicine	≥1.0 x 10 <sup>6</sup>	2	≥15 PDL	Fibroblast Basal Medium (PCS-201-030)	Fibroblast Growth Kit–Low Serum (PCS-201-041)	Adipocyte Differentiation Tool (PCS-500-050)		
Skeletal Muscle Cells									
Skeletal Muscle Cells; Normal, Human (PCS-950-010)	Ideal culture model for the study of muscle cell biology, diabetes, insulin receptor studies, muscle cell metabolism, muscle tissue repair, and myotube development	≥5.0 x 10 <sup>5</sup>	3	>10 PDL	Mesenchymal Stem Cell Basal Medium (PCS-500-030)	Skeletal Muscle Growth Kit (PCS-950-040)	Skeletal Muscle Differentiation Tool (PCS-950-050)		

## ※ ATCC 담당 지역별 코람 지사/대리점 연락처

[서울/지사1] (주)코람데오랩	T. 02-555-0094	[서울/지사2] (주)코람엑손바이오랩	T. 02-553-1230
[서울/지사3] 코람진어스	T. 070-4772-9001	[수원/경기] (주)코람에텔바이오	T. 031-295-0155
[인천/경기] 코람에이비셀(주)	T. 032-833-0197/031-703-7768		
[강원] (주)강원코람	T. 033-262-6447	[대전/충남/충북] 대전코람(주)	T. 042-825-0312
[경북/대구] 브니엘바이오(주)	T. 053-381-3611	[전남/광주] (주)진성SMR	T. 062-672-7631
[부산] (주)팜텍	T. 051-343-0100	[전북] (유)바이오준	T. 063-247-9994
[경남] 바이오드림(주)	T. 055-762-8059	[충북] (주)중수과학	T. 043-235-2300
[울산/포항/경주] 피엘에스	T. 054-745-1397		

10801 University Boulevard  
Manassas, Virginia 20110-2209



홈페이지: [www.korambiotech.com](http://www.korambiotech.com)  
 학술문의: [tech@korambiotech.com](mailto:tech@korambiotech.com)  
 전화: 02-556-0311

[www.atcc.org](http://www.atcc.org)

PC-012022-v03

©2022 American Type Culture Collection. The ATCC trademark and trade name, and any other trademarks listed in this publication are trademarks owned by the American Type Culture Collection unless indicated otherwise. Vi-Cell® is a registered trademark of Beckman Coulter.

These products are for laboratory use only. Not for human or diagnostic use. ATCC products may not be resold, modified for resale, used to provide commercial services, or to manufacture commercial products without prior ATCC written approval.