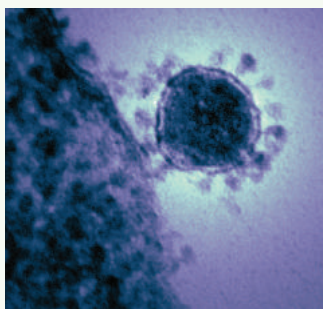


ATCC에서 제공하는 Coronavirus Research Materials



Credible solutions for critical public health emergencies

The outbreak of severe acute respiratory syndrome-related coronavirus 2 (SARS-CoV-2) has put the health and safety of the global community at risk. With the virus continuing to spread and the number of confirmed cases and deaths rising, the World Health Organization has declared the outbreak a public health emergency of international concern. As in previous public health emergencies such as Zika, SARS, MERS, and the H1N1 2009 pandemic, ATCC stands ready to partner with the dedicated scientists working toward preventing and containing this devastating outbreak.



Heat-inactivated SARS-CoV-2

When developing and using a novel detection assay, researchers need access to clinically relevant positive controls to ensure the reliability and accuracy of their results. To meet this need, ATCC has developed a heat-inactivated preparation of the 2019-nCoV/USA-WA1/2020 strain (ATCC® VR-1986HK™).

- Confirmed to be inviable and non-replicative
- Quantitated by ddPCR™
- Useful for assays that include an extraction step

Order your preparation today at www.atcc.org/HKCoronavirus

Polyclonal Anti-SARS-CoV-2 Spike Glycoprotein

We have developed a rabbit polyclonal antibody prepared against the spike glycoprotein of SARS-CoV-2 strain Wuhan-Hu-1 (ATCC® VR-1997™). This preparation was ammonium sulfate precipitated from pooled rabbit serum and purified by protein G affinity chromatography. Get yours today at www.atcc.org/SARSantibody.

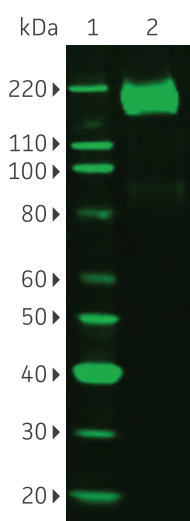


Figure 1: Western blot analysis. Analysis was performed using 0.5 µg SARS-CoV-2 S glycoprotein (ACROBiosystems), 1:15,000 dilution of ATCC VR-1997, and 1:10,000 dilution of anti-rabbit IRDye® conjugate (LI-COR Biosciences). Lane 1: MagicMark™ XP Protein Standard (Thermo Fisher Scientific). Lane 2: SARS-CoV-2 S Glycoprotein.

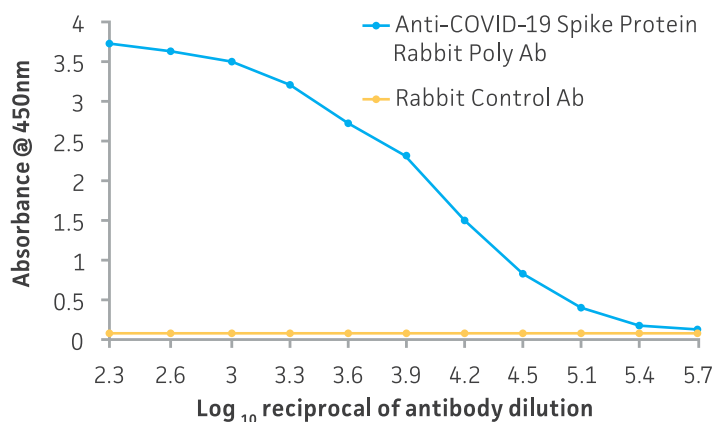
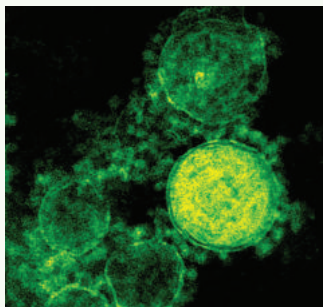


Figure 2: Indirect ELISA. Analysis was performed using 1 µg/mL SARS-CoV-2 S glycoprotein (ACROBiosystems), 1:250 to 1:512,000 dilution of ATCC VR-1997, and 1:10,000 dilution of anti-rabbit HRP conjugate. The polyclonal antibody was also reactive to Human coronavirus HKU1 S glycoprotein.



Genomic RNA for SARS-CoV-2

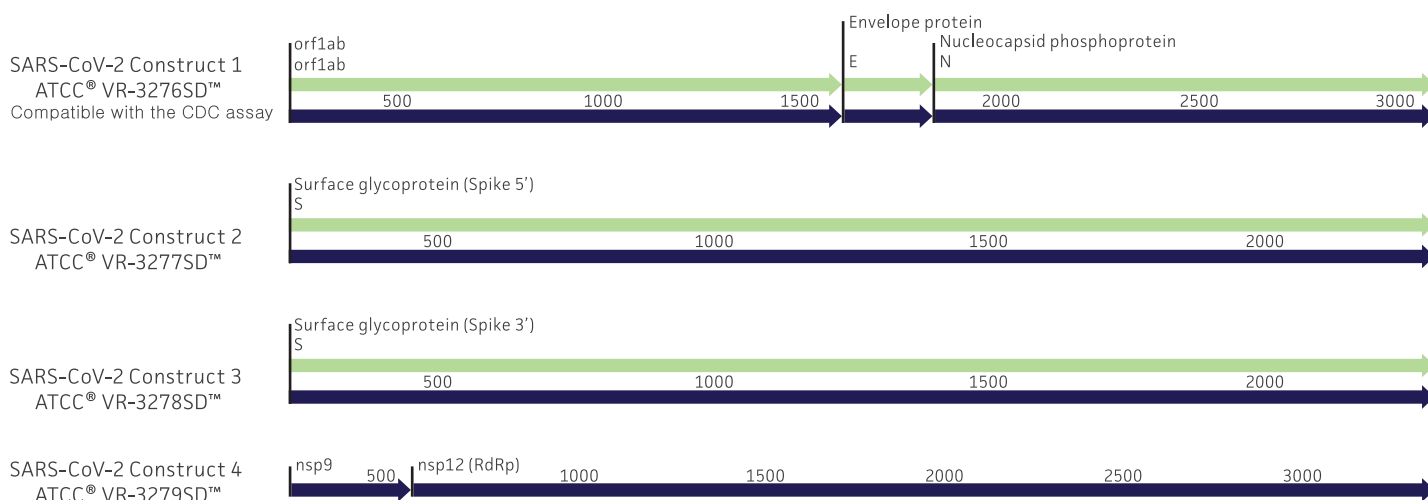
Clinically relevant reference materials are an essential component of basic research and diagnostic development. That's why ATCC has made it a priority to provide genomic RNA preparations from strains sourced from infected patients in Washington state (2019-nCoV/USA-WA1/2020), Hong Kong (2019-nCoV/Hong Kong/VM20001061/2020), Italy (2019-nCoV/Italy-INMI1), and Germany (Germany/BavPat1/2020).

- ③ Whole-genome sequences available on the ATCC Genome Portal
- ③ Prepared using methods known to inactivate viruses
- ③ Suitable for RT-PCR or other RNA-based assays

Discover more about these reference materials at www.atcc.org/Coronavirus.

Synthetic Molecular Standards for SARS-CoV-2

The pathogenic nature and transmission dynamics of SARS-CoV-2 has necessitated that the utmost care should be taken when handling the virus. To help ensure the safety of laboratory researchers, ATCC has developed four quantitative synthetic molecular standards for use as controls in the development of assays designed to detect and quantify SARS-CoV-2. Because these standards are synthetically derived, they eliminate the need to culture viruses in the laboratory and they are safe to use under biosafety level 1 conditions. Further, SARS-CoV-2 construct 1 is compatible with the nucleocapsid-targeted real-time RT-PCR primer and probe sets developed by the CDC.



| ATCC® No. | Description | Compatible assays |
|---------------------------|--|--|
| VR-3276SD™ HOT! | Quantitative Synthetic SARS-CoV-2 RNA containing portions of ORF1ab, N, E, nsp12 (RdRp), and ORF1b-nsp14 genes | <p>China CDC Primers and probes for detection 2019-nCoV (24 January 2020)</p> <p>Diagnostic detection of Wuhan coronavirus 2019 by real-time RT-PCR – Charité, Berlin Germany (17 January 2020)</p> <p>Detection of 2019 novel coronavirus (2019-nCoV) in suspected human cases by RT-PCR – Hong Kong University (23 January 2020)</p> <p>PCR and sequencing protocol for 2019-nCoV – Department of Medical Sciences, Ministry of Public Health, Thailand (Updated 28 January 2020)</p> <p>US CDC Real-Time RT-PCR Panel for Detection 2019-Novel Coronavirus (28 January 2020)</p> <p>US CDC panel primer and probes– U.S. CDC, USA (28 January 2020)</p> |
| VR-3277SD™ | Quantitative Synthetic SARS-CoV-2 RNA: containing a portion of Spike 5' end gene. | Detection of WN-Human1 sequence from clinical specimen. – National Institute of Infectious Diseases Japan (17 January 2020) |
| VR-3278SD™ | Quantitative Synthetic SARS-CoV-2 RNA: containing a portion of Spike 3' end gene. | PCR and sequencing protocols for 2019-nCoV- National Institute of Infectious Diseases Japan (24 January 2020) |
| VR-3279SD™ | Quantitative Synthetic SARS-CoV-2 RNA containing the portion of nsp9 and nsp12 (RdRp) genes | <p>RT-PCR assays for the detection of SARS-CoV-2 with RdRp – Institut Pasteur, Paris (2 March 2020)</p> <p>Diagnostic detection of Wuhan coronavirus 2019 by real-time RT-PCR – Charité, Berlin Germany (17 January 2020)</p> |



SARS-CoV-2 External Control Kit

HOT! **NEW**

This RUO kit (ATCC® MP-32™) provides a platform agnostic, full-process control that allows clinical laboratories to easily and accurately verify and assess the quality of their molecular diagnostic assays.

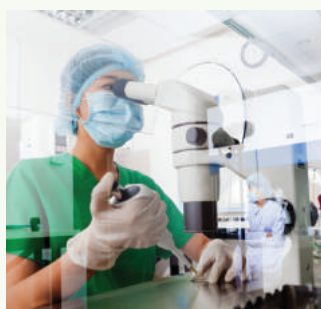
- Positive and negative controls are designed to be compatible with most commercial and laboratory-developed tests
- Full-process controls enable researchers to assess the performance of critical workflow steps
- Whole-genome sequenced virus allows for nearly universal use across multiple platforms
- Heat-inactivated clinical strain ensures safe handling and provides assurance that your test is detecting the target of interest

Discover ATCC quality in a kit—learn more or order yours today at www.atcc.org/CoV-2_QCKit.

Coronavirus Research Materials

Having access to a variety of coronavirus strains is essential for establishing the inclusivity and exclusivity of a novel assay. To support this need, ATCC provides viral strains and nucleic acids representing alphacoronaviruses and betacoronaviruses known to cause disease in humans. Explore our complete collection of research materials at www.atcc.org/coronavirus.

| ATCC® No. | Product Description |
|----------------------|--|
| Viral strains | |
| VR-1986HK™ | Heat-inactivated 2019 Novel coronavirus strain 2019-nCoV/USA-WA1/2020 HOT! |
| VR-1558™ | Betacoronavirus 1 strain OC43 |
| VR-740™ | Human coronavirus 229E |
| Nucleic acids | |
| VR-3276SD™ | Quantitative Synthetic SARS-CoV-2 RNA (portions of ORF 1ab, E, N genes) |
| VR-3277SD™ | Quantitative Synthetic SARS-CoV-2 RNA (5' portion of S gene) |
| VR-3278SD™ | Quantitative Synthetic SARS-CoV-2 RNA (3' portion of S gene) |
| VR-3279SD™ | Quantitative Synthetic SARS-CoV-2 RNA (nsp9, nsp12 [RdRp]) |
| VR-1986D™ | Genomic RNA from SARS-CoV-2 strain 2019-nCoV/USA-WA1/2020 HOT! |
| VR-1991D™ | Genomic RNA from SARS-CoV-2 strain Hong Kong/VM20001061/2020 |
| VR-1992D™ | Genomic RNA from SARS-CoV-2 strain 2019-nCoV/Italy/INMI1 |
| VR-1994D™ | Genomic RNA from SARS-CoV-2 strain Germany/BavPat1/2020 |
| VR-1558D™ | RNA from Betacoronavirus 1 OC43 |
| VR-1558DQ™ | Quantitative Genomic RNA from Betacoronavirus 1 OC43 |
| VR-740D™ | RNA from Human coronavirus 229E |
| VR-740DQ™ | Quantitative Genomic RNA from Human coronavirus 229E |
| VR-3263SD™ | Quantitative Synthetic Human coronavirus NL63 RNA |
| VR-3262SD™ | Quantitative Synthetic Human coronavirus HKU1 RNA |
| VR-3248SD™ | Quantitative Synthetic Middle East respiratory syndrome coronavirus (MERS-CoV) RNA |
| VR-3280SD™ | Quantitative Synthetic SARS-CoV [2003] RNA |



Customize your COVID-19 Research

Are you looking to outsource your COVID-19–related assays or materials? Our custom services team can help!

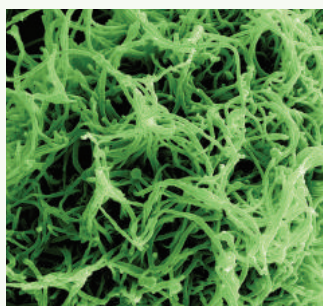
From biobanking and authenticating your precious research materials to developing custom controls and nucleic acids—we have the solutions needed to support every stage of your COVID-19 project.

Contact our custom services team today at go.atcc.org/CustomServices.

Cell Lines for SARS-CoV-2 Propagation

To develop new vaccines or test antiviral compounds, researchers need access to virus isolates. However, during the outbreak of a novel virus like SARS-CoV-2, it can be challenging to determine which propagation host is ideal for successful viral replication. In a recent study by Harcourt J, *et al.*, it was discovered that SARS-CoV-2 can replicate to a high titer in Vero CCL-81 and Vero E6 cells in the absence of trypsin. These cell lines and the media needed to cultivate them are available at ATCC—explore our collection today.

| ATCC® No. | Product Description |
|-------------|---|
| HTB-37™ | Caco-2 [Caco2] |
| HTB-55™ | Calu-3 |
| CCL-244™ | HCT-8 |
| CCL-171™ | MRC-5 |
| CCL-81™ | Vero |
| CRL-1586™ | Vero C1008 [Vero 76, clone E6, Vero E6] |
| CCL-81-VHG™ | Vero.STAT1 KO |



Cell Lines for Enhanced Virus Production

The continual spread of deadly viruses necessitates the development of novel prevention and treatment options. However, the development of a new antiviral vaccine can be challenged by low-yielding manufacturing processes. To address this, ATCC used CRISPR/Cas9 gene-editing technology to develop STAT1 knockout cell lines capable of producing high-titer viral stocks.

Discover how these advanced biological models can be used in your vaccine development research at www.atcc.org/Vaccine.

Explore our coronavirus research materials at www.atcc.org/Coronavirus



☎ 02-556-0311 📠 02-556-0828 ✉ tech@korambiotech.com 🌐 www.korambiotech.com

※ 주문 및 견적 문의는 아래 지역별 지사/대리점으로 연락주세요.

[서울 지사1] (주) 코람데오랩 T. 02-555-0094
 [서울 지사3] (주) 코람랩테크 T. 02-566-3760
 [수원/경기] (주) 코람에틸바이오 T. 031-295-0155
 [강원] (주) 강원코람 T. 033-262-6447

[서울 지사2] (주) 코람엑손바이오랩 T. 02-553-1230
 [서울 지사4] 코람진어스 T. 070-4772-9001
 [인천/경기] 코람에이비셀 (주) T. 032-833-0197
 [대전/충남/충북] 대전코람 (주) T. 042-825-0312

[대구/경북] 브니엘바이오 (주) T. 053-381-3611
 [부산] (주) 팜텍 T. 051-343-0100
 [경남] 바이오드림 (주) T. 055-762-8059
 [울산/포항/경주] 피엘에스 T. 054-745-1397

[전남] (주) 진성SMR T. 062-672-7631
 [전북] (유) 바이오준 T. 063-247-9994
 [충북] (주) 중수과학 T. 043-235-2300

COR-122020-v05

©2020 American Type Culture Collection. The ATCC trademark and trade name, and any other trademarks listed in this publication are trademarks owned by the American Type Culture Collection unless indicated otherwise. ddPCR is a trademark of Bio-Rad Laboratories, Inc. IRDye® is a registered trademark of LI-COR Biosciences. MagicMark™ XP is a trademark of Thermo Fisher Scientific. These products are for laboratory use only. Not for human or diagnostic use. ATCC products may not be resold, modified for resale, used to provide commercial services or to manufacture commercial products without prior ATCC written approval.